
Install confidence with
xDetect



Powering Business Worldwide



It's what we do

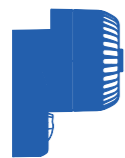
Fire systems you can depend on

Robust fire alarm systems and devices are essential to the protection of people, property and business continuity in commercial buildings. Early detection of a fire risk can prevent catastrophic damage. The risks associated with failure - from loss of life to irreparable reputational damage, make the selection of a fire system a vitally important process.

To ensure the highest levels of safety, all of the people involved in the purchase, installation, commissioning, operation and maintenance of a fire system need to know that the chosen system, and all associated devices, can be relied upon.

Eaton brings decades of expertise to the development of fire systems working closely with industry organisations and customers to shape the future of fire safety. Products within the range, spanning state-of-the-art control panels, detectors and alarm devices, are seamlessly compatible with each other, and are quality assured through a process of rigorous testing.

Industry firsts



Visual alarm device

First low-current solution to meet EN54-23 standard for visual alarm devices



Touchscreen panel

First to introduce a touchscreen on a fire alarm system control panel with Menvier



Resettable call point

Creator of the resettable manual call point.

Overview of the xDetect Family

- xDetect (standard)
 - Small: 1-2 loop(s)
 - Large: 2-4 loops
- xDetect Mini
 - 1-2 loop(s)
- Different door options - network panel, 32/128/256 zonal indicator (Mini/Small/Large)
- Modular system architecture - configurable backplane, optional colour-coded cards & modules
- EN54 certified
- Networkable up to 250 panels
- USB connection
- Intuitive colour-coded touchscreen interface
- Batteries not included



Joined-up design that goes the full distance

Eaton has gone back to first principles with xDetect to optimise every stage of the user journey. By listening to installers to understand their priorities, it's created a mid-tier fire panel that's simpler to use, easier to scale and extremely dependable.

From product selection, installation and commissioning through to end use, servicing and expansion, xDetect demonstrates a **consistent design philosophy** that puts installers and users first.



Flexible

- Modular system architecture
- 600mA current per loop
- Matrix based cause & effect programming
- Superior operation through EFGVS

Safe & secure

- Cybersecure - An Eaton secure-by-design solution
- "Fault tolerant" ring design network
- Built in redundancy for when a fault does occur
- Fully integrated fan / vent control capabilities for ultimate safety

Instantly familiar

- Easy to use "tablet-like" 7" colour touchscreen
- Large, clear buttons & icons
- Adaptive, high contrast colour coding
- Improved language pack capabilities for all

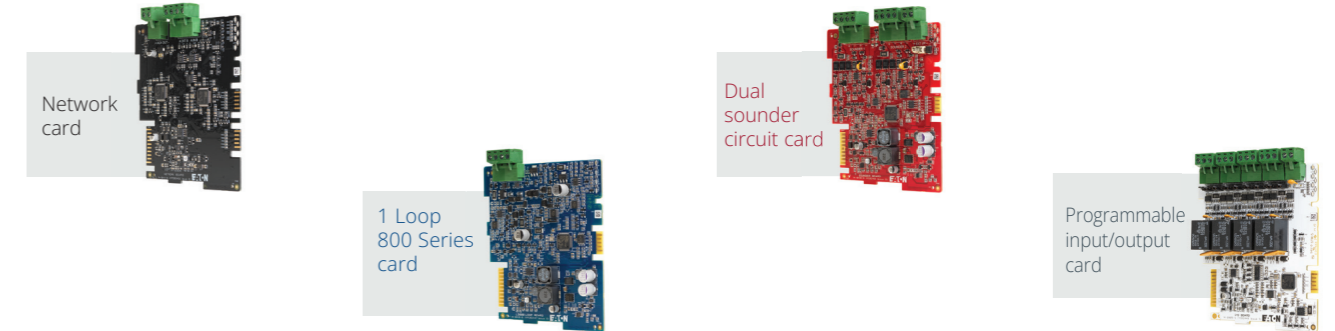
Go modular and shape your own fire offering

Early customer research for xDetect showed that installers and specifiers wanted the **independence to quote for a fire panel with customised capabilities**. It means that you're **better placed to manage your offer** and deliver

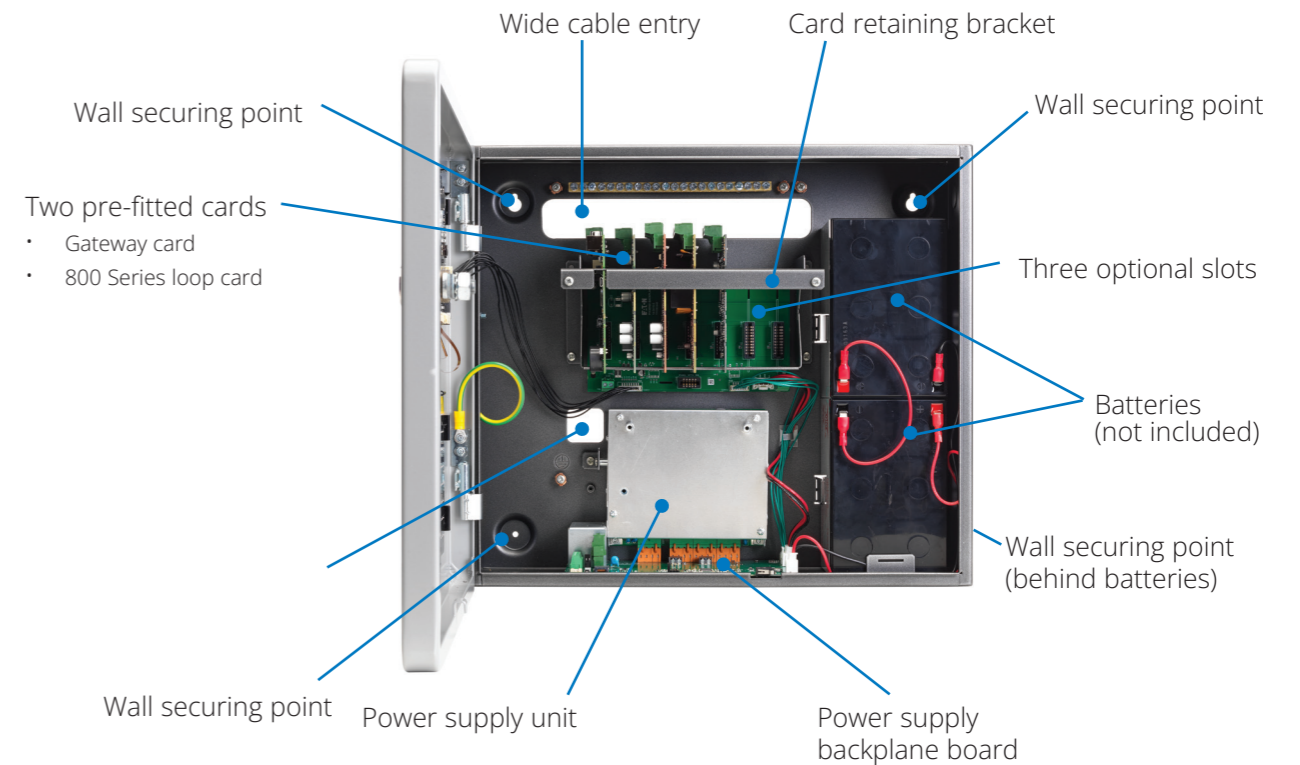
effective system designed around your customers needs. xDetect base units comes small or large supporting either a 7- or 12-card frame. Customisation and upgrades are seamless and errorproof with six "plug in and go" colour-coded cards and a range of door options.

"Plug in and go" cards

Customisation and upgrades are seamless and errorproof with six "plug in and go" colour-coded cards and a range of door options.



A look inside – Small enclosure



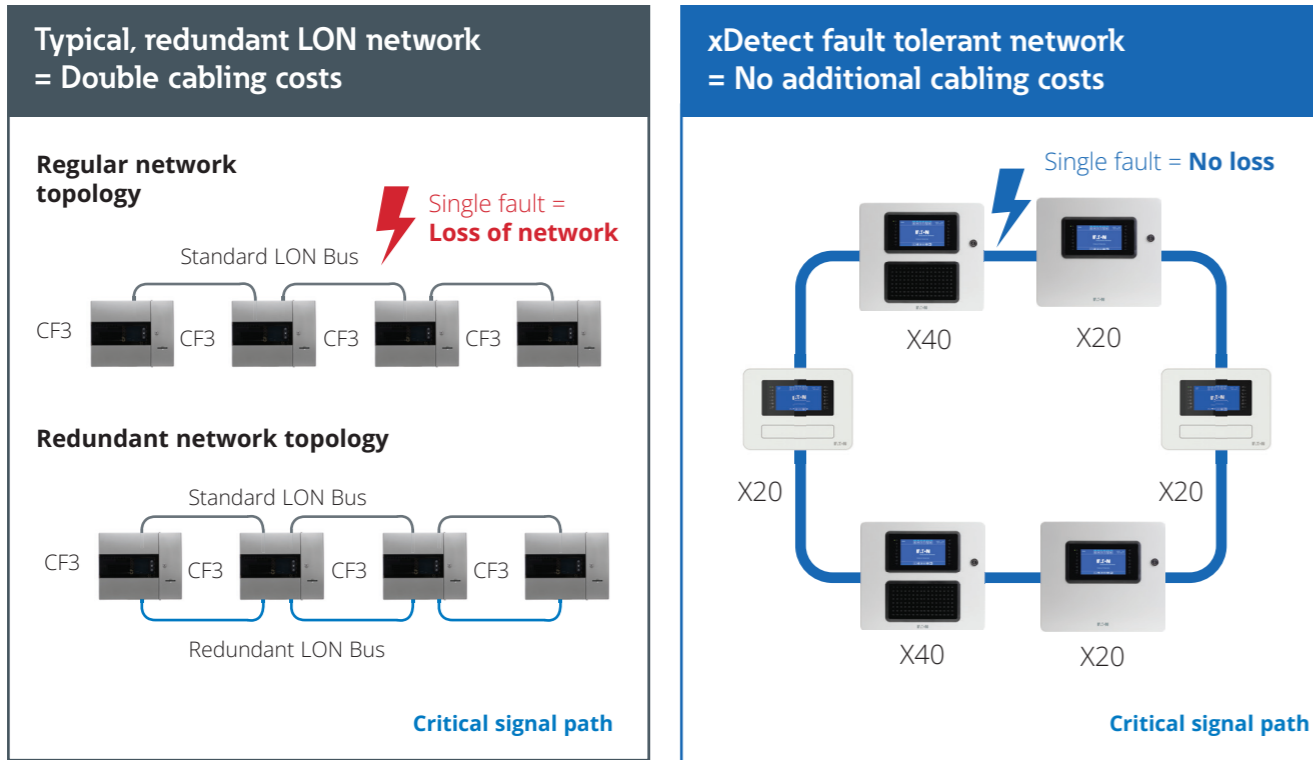
Three ways it puts installers in the driving seat

- 1 Flexibility**
 xDetect is easy to expand and adapt in line with building owners' changing needs thanks to its modular system architecture.
- 2 You're the expert**
 No more "over specifying a site", create bespoke system solutions every time - all while carrying minimal stock of "basic units".
- 3 Rapid fault-finding**
 Single swap of cards with local status LEDs means you can resolve issues without having to disturb the rest of the system.

Less cabling, cheaper projects; no compromise on safety

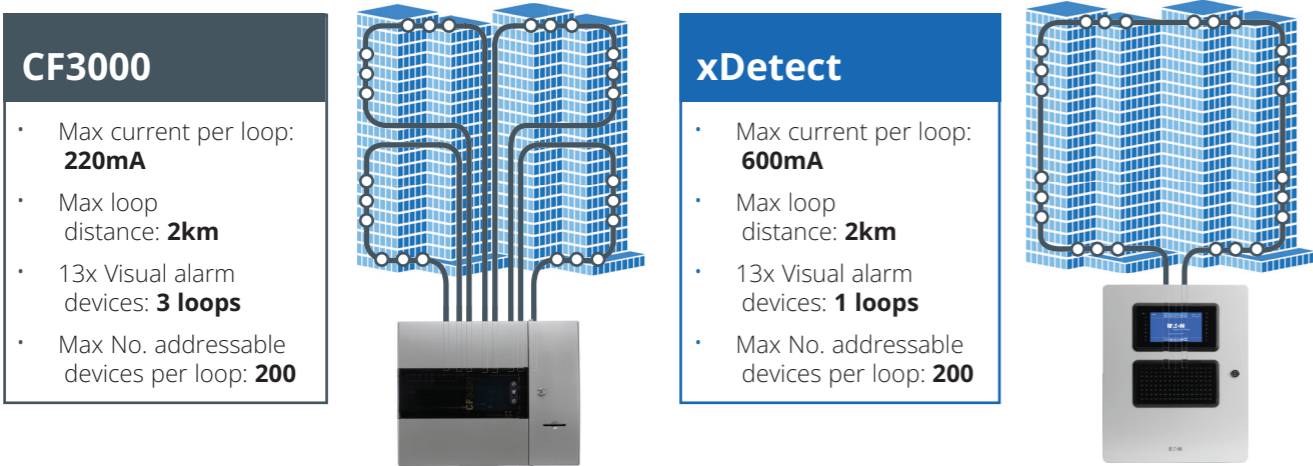
Say goodbye to redundant cable

A typical panel network installation requires a large amount of planning and cabling across a campus. xDetect uses a streamlined RS-485 network, optimising cable costs while providing maximum safety.



The most powerful panel we've ever created

To support many devices, a typical panel would require many circuits and a large amount of return path cable. xDetect's 600mA current per loop means more high powered devices can be powered per loop, giving large savings through cable length.



Greater resilience and rapid on-site troubleshooting

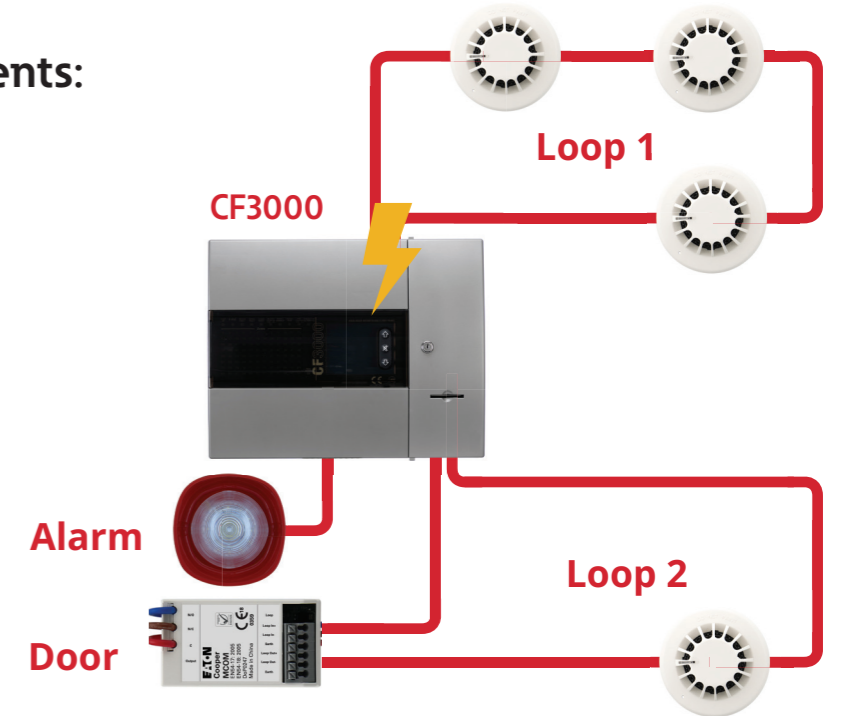
Faults can happen at any time when sites go live – particularly when demanding schedules are constantly evolving. Premises management need to be kept informed about any changes in fire coverage and clearly understand any daily impact on their fire evacuation strategy. xDetect simplifies this entire process. Critically, **any loop card**

failure is confined to one loop circuit only – all others remaining fully operational. This is by design and allows for segmented protection against faults and loss of coverage. Downtime is minimised completely as each card provides clear status indication. It means technicians can **identify issues quickly and rectify with minimal effort**, with each frame allowing for swapping of the affected card without disturbing other system functionality.

From an end user's perspective this adds significant value. Any issues can be dealt with swiftly without powering down the entire system, running diagnostics and losing fire coverage in areas unrelated to the fault's origin. The result? **Less expensive, inconvenient downtime** while providing more peace of mind and control for building occupants.

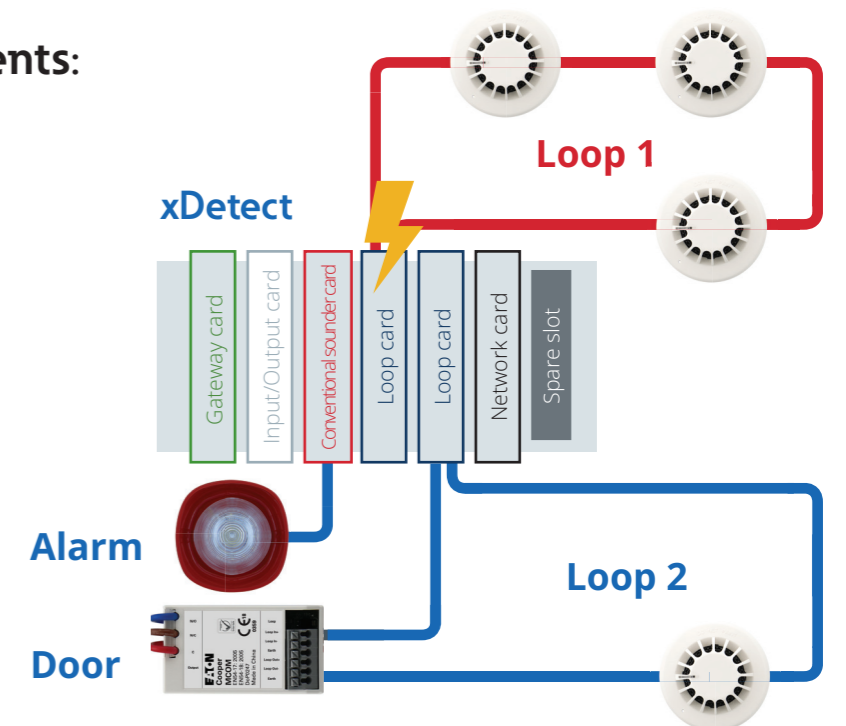
Example timeline of events: System with no redundancy

- 1 Single loop card PCB fails
- 2 Loss of 2 loops of detection
- 3 Fault is recorded on panel and reviewed by relevant engineer
- 4 The building is closed
- 5 Panel is replaced
- 6 Building fully reopens



Example timeline of events: System with redundancy

- 1 Single loop card PCB fails
- 2 Loss of 1 loop of detection
- 3 Fault is recorded on panel and reviewed by relevant engineer
- 4 Area of building covered by loop 1 is closed (rest of building remains open)
- 5 Faulty loop card is replaced
- 6 Area of building previously closed, reopened



Changing the face of fire panel design

Multiple sub-menus, small screens and lack of colour on fire alarm panels have historically made them awkward to navigate. xDetect features a clear, tablet-like interface that creates a feeling of easy-to-use confidence so critical in an emergency.

It builds on the achievements of our legacy brand Menvier, a pioneer in developing touchscreen displays for fire

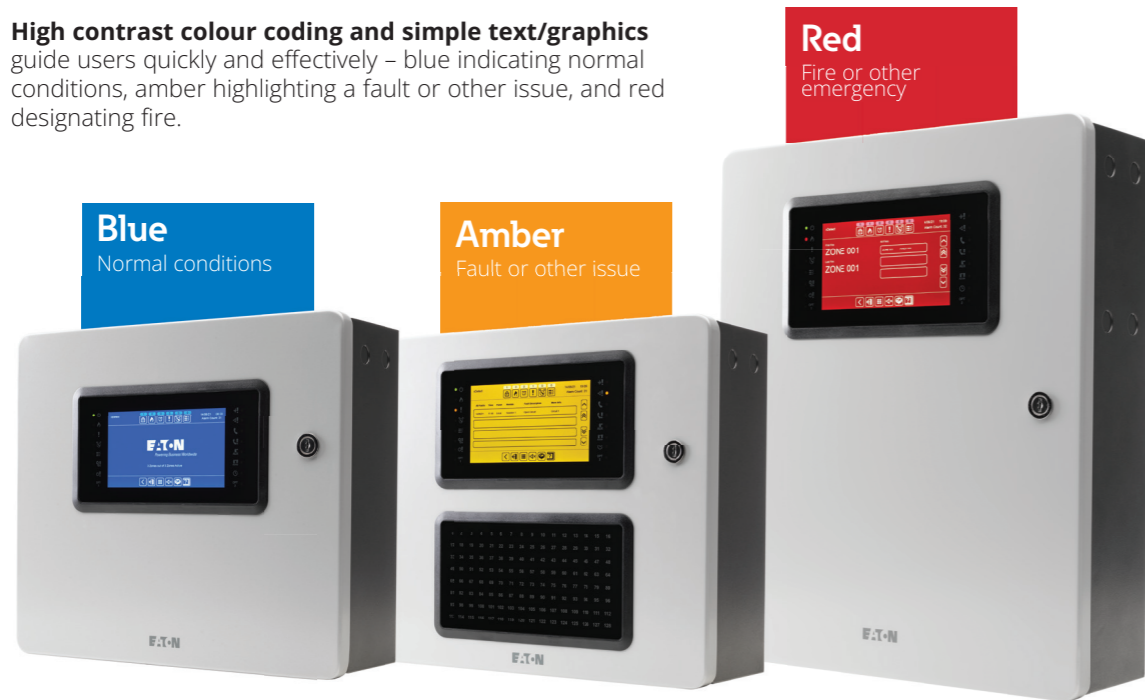
alarm panels. Its restrained design **translates into fast, easy navigation for users which will be popular with installers, facility managers and fire fighters alike.**

Eaton's guiding principle for xDetect is that every user – no matter what level of fire panel knowledge – should immediately feel familiar with it in the same way they interact with everyday digital devices.

Instantly familiar, easily learnt

Five features of xDetect's interface in focus

- 1 **High contrast colour coding and simple text/graphics** guide users quickly and effectively – blue indicating normal conditions, amber highlighting a fault or other issue, and red designating fire.



- 2 **A consistent layout** across all screens and modes ensures that common elements, such as scroll bars and buttons, are always in the same place. Anything with a box around it is interactive. And anything without one, isn't.

- 3 **Quick access rows** 'Always visible' top and bottom row buttons so you can access specific menus or areas much faster.

- 4 **Large, clear buttons & icons** make the panel ideally suited for those with poor eyesight, or when smoke reduces visibility.

- 5 **Flex display by user:** Highest level access – such as for an engineer – will show more screen options than for someone with basic access rights.

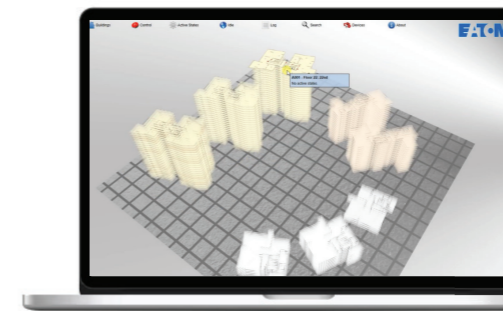


- 6 **Language pack capabilities:** Ability to load new languages easily. Currently supports English, Arabic, Italian, Brazilian, Portuguese, Greek, Vietnamese

Command and control large xDetect systems with EFGVS

EFGVS is Eaton's Fire Graphical Visualization Software. It is a powerful software package which allows xDetect fire system events to be viewed and managed on a PC by an authorised operator.

Users can monitor, control and interrogate their systems to ensure alarms are located quickly and dealt with efficiently. Ergonomic and intuitive, EFGVS includes a comprehensive list of advanced features, offering the system designer and site supervisor a very efficient tool, ensuring all information and controls are available at their fingertips.

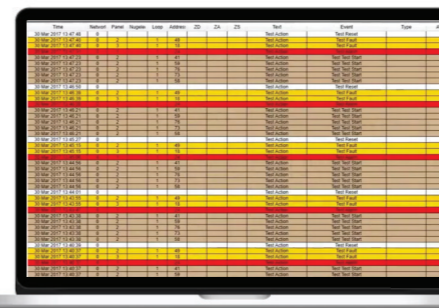


Visualise in 2D and 3D

- Floor plan system visualization
- Large site supervision

Find key system information quickly

- Locate alarms, faults and missing panels
- Tailored access based on user credentials



Generate comprehensive reports

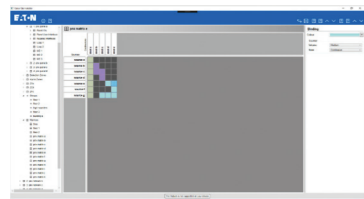
- Record system events and faults
- Network history view/search

All installations made simple with xDetectWorks

What is xDetectWorks?

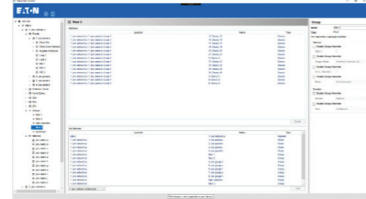
xDetectWorks is the powerful PC programming software design to make system design and configuration simple with xDetect.

It is free and is activated with a license code to be generated by the Eaton Fire Technical Support team once training has been completed.



Matrix based cause & effect (C&E) programming

- Straightforward to program
- Save engineering time/costs
- Handover projects faster



Groups

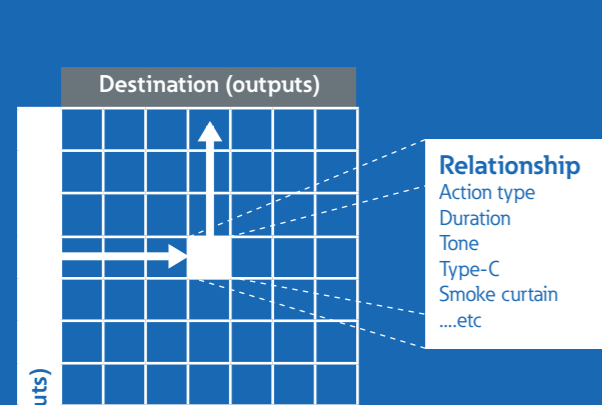
- Create geographical structures
- Better represent the field layout
- Customised groups for specific C&E



Type IDs

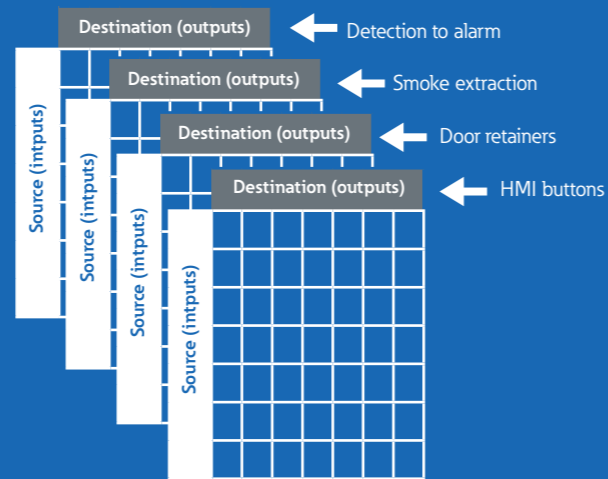
- Easily identifiable
- Unique definitions
- Simple to edit settings

The best of both: choose basic or advanced cause & effect depending on the site complexity



Basic

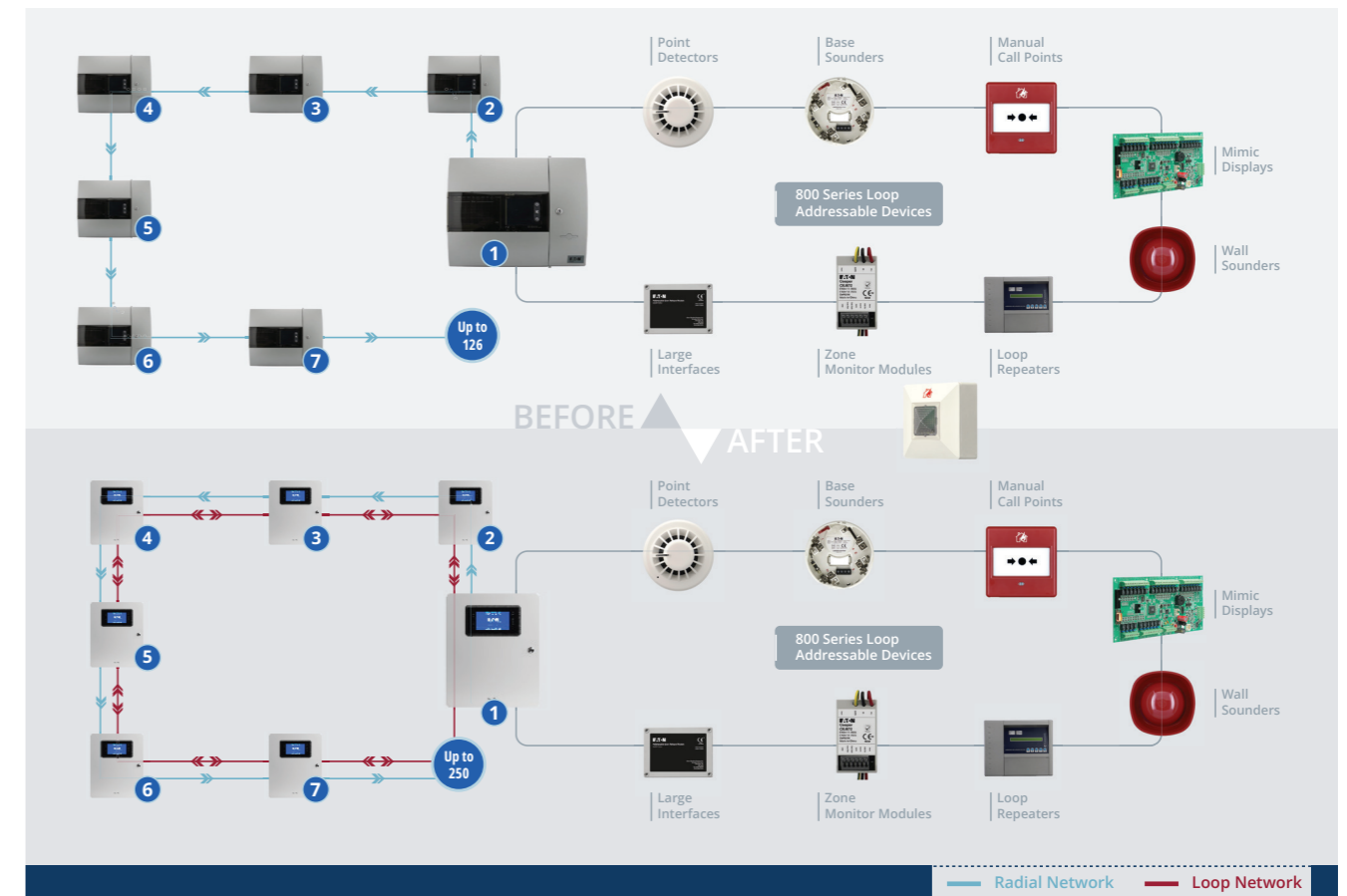
- Simple to program
- Easily understood by others
- Basic systems
- Fast to implement
- Easy to check and handover



Advanced

- Segment programming - split types of output such as door retainers, HMI buttons etc
- Commission complex systems faster
- Easier to maintain complex systems
- Simple to verify changes with confidence, particularly helpful if changes or faults are being added/reviewed many years after the initial installation

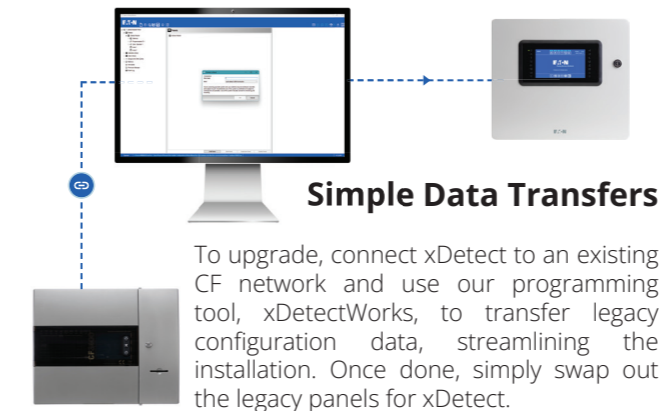
Straightforward Upgrade Process



Support for Radial and Loop Networks

Designed for flexibility, xDetect can easily integrate into existing radial network systems, providing an upgrade path for loop-based network topologies without requiring any additional changes to the network.

- Extend the life of existing installations
- Minimal downtime, cost and manhours during panel upgrades
- One system, flexible to all applications



Transfer Configuration Using xDetectWorks

1 xDetect Family, 60+ Compatible Devices

Extensive Compatibility

xDetect boasts the same, broad range of compatible peripherals as previous generation Eaton panels. Upgrading your system is cost-effective and disruption-free; other than the panel, no devices in the system need replacing.

Turn to pages 18-22 for a full list of compatibility.

Protecting people, property and data

Cyber attacks – The threat to buildings

By 2025, 41.6 billion connected devices will be generating 79.4 zettabytes (ZB) of data worldwide¹. From manufacturing and testing to installation and service, it's a seismic shift already creating huge opportunities for organisations. But at the same time, the trend brings big risks.

At a minimum, a security breach can result in operational downtime and/or data loss, in turn seriously impacting reputation, customer loyalty and the bottom line. At worse, a breach could also have implications for personal safety – especially in the context of fire detection systems on which lives depend.

Historically, fire detection systems were typically hardwired and un-networked. However, Internet of Things (IoT) technology now means they can be connected at any time and from anywhere – for example enabling them to communicate with heating, ventilation and air-conditioning (HVAC), security and other building management/safety systems, such as those in alarm receiving centres (ARCs). If such networks are poorly designed and maintained, they're effectively leaving the door wide open to cyberattacks by bad actors. These can threaten an organisation's wider IT infrastructure driven by multiple motives ranging from the political and ideological, through to the purely financial.

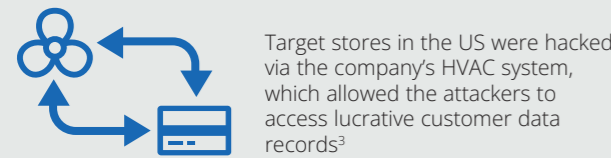
Did you know?
4 in 10

Smart building automation control systems were cyber attacked in the first half of 2019²

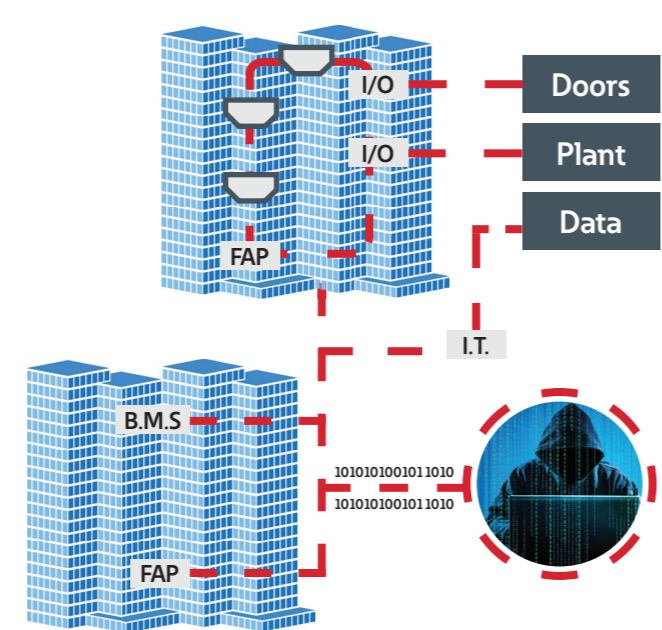
Some of the risks



HVAC system to customer bank information



Target stores in the US were hacked via the company's HVAC system, which allowed the attackers to access lucrative customer data records³



PSTN shutdown to increase the importance of cybersecurity

Predicted closure dates



One medium-term change set to have a big impact on the importance of fire market cybersecurity is the shutting down of PSTN networks – the traditional method of connecting fire systems to Alarm Receiving Centres (ARCs) – which will be replaced by digital IP.

The switch-off, scheduled in the UK by 2025⁴ and globally by 2030⁵, reflects the fact that the PSTN system has become outdated, is expensive to maintain and there are

fewer people around with the necessary PSTN skills.

Millions of alarm systems will need to be reconfigured to meet this change, including four million in the UK alone (2017 figures). The upside is that the shift to IP networks opens up possibilities to significantly improve the information that fire services have when attending a call out.

In the future, a 'critical information pack' on the event, including building layouts, fire zone charts and

details of fire spread, could be sent directly from the fire system to 'smart' fire engines as they travel to the scene⁶. The system could also raise the alarm to an ARC. Such improvements in how fire services respond will increase the chances of protecting people and property.

However, as the data flow increases, the importance of cybersecurity becomes more critical.

Developed with cybersecurity in its DNA

xDetect is an Eaton secure-by-design panel that simplifies control of fire alarms and other peripherals in commercial buildings, protecting people, property and data. At its heart is the **highest level of cybersecurity**, enabling secure communications and protecting both data and assets from hackers. Entirely futureproof and ready for remote access, xDetect can be safely integrated into a Building Management System (BMS) and the Internet of Things (IoT).

xDetect has followed Eaton's Secure Development Life Cycle (SDLC) cybersecurity assessment process through all stages of the design development. This process features protocol communication checks which are integral to ensuring the xDetect panel will only communicate with authorised peripherals. Tamper switches are also installed by default to ensure that any physical access to the panel is always recorded.

An Eaton secure-by-design solution

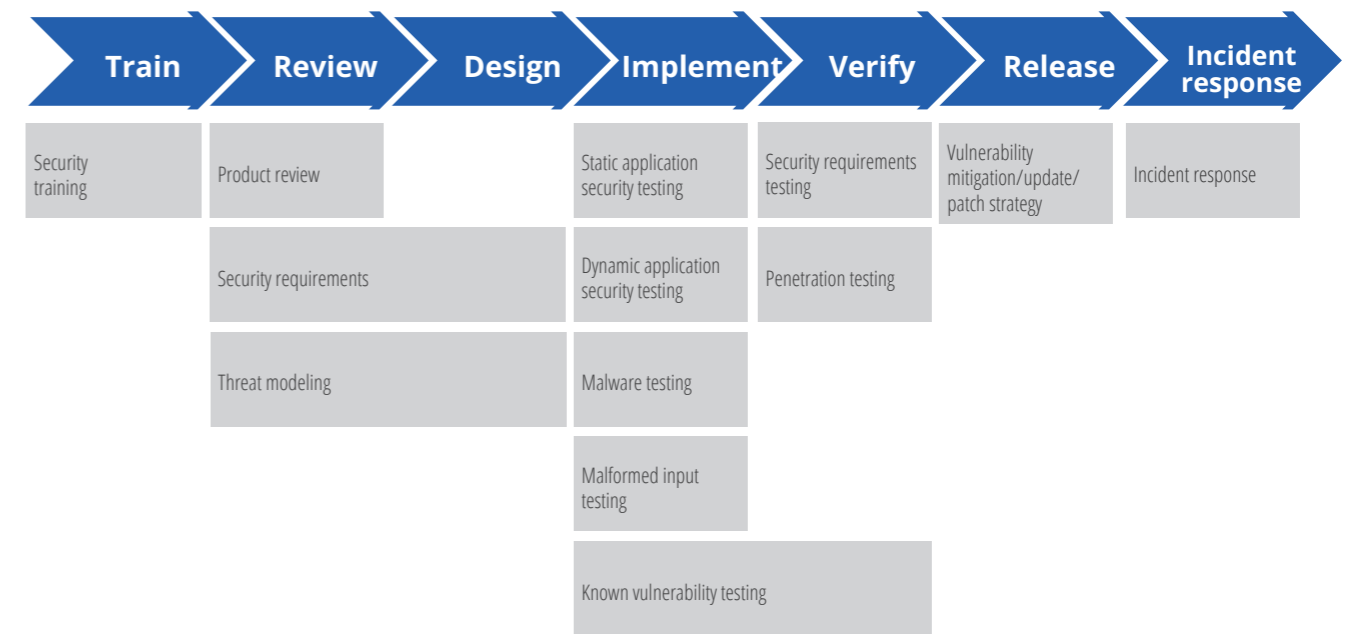


Complies with rigorous cybersecurity, process, requirements and testing standards

About our Secure Development Life Cycle (SDLC) process

Our commitment to working at the highest cybersecurity standards is well-established and increasingly shaping its product range. The company introduced the first research and testing facility approved to participate in UL's

Cybersecurity Client Lab Validation program in Pittsburgh, Pennsylvania. And in 2018, UL approved a second Eaton lab to join the programme – another industry first – in Pune, India.



Two features in xDetect identified by the SDLC process

- 1 Protocol communication checks** ensure that only authorised peripherals can communicate with the panel
- 2 Tamper switches** installed by default mean that any physical access to the panel is always recorded



Learn more at Eaton.com/Cybersecurity

¹ "The Growth in Connected IoT Devices is Expected to Generate 79.4ZB of data in 2025, According to a New IDC Forecast" Business Wire, 2019
<https://www.businesswire.com/news/home/20190618005012/en/The-Growth-in-Connected-IoT-Devices-is-Expected-to-Generate-79.4ZB-of-Data-in-2025-According-to-a-New-IDC-Forecast>
² "Smart buildings threat landscape" Kaspersky, 2019
https://www.kaspersky.com/about/press-releases/2019_smart-buildings-threat-landscape
³ "Target hackers broke in via HVAC company" Krebs Security, 2014

<https://krebsonsecurity.com/2014/02/target-hackers-broke-in-via-hvac-company/>
⁴ "FIA spells out challenges surrounding PSTN shutdown" IFSEC Global, 2017
<https://www.ifsecglobal.com/global/fia-spells-out-challenges-surrounding-pstn-shut-down/>
⁵ "Out with the old - phasing out of PSTN/POTS globally by 2030" spearline, 2019
<https://www.spearline.com/blog/post/out-with-the-old-phasing-out-of-pstn-pots-globally-by-2030/>
⁶ "Smart fire engines to the rescue" The Telegraph, 2019
<https://www.telegraph.co.uk/business/future-technologies/smart-fire-engines/>

Addressable control panels

xDetect - product data sheet

Eaton



An Eaton secure-by-design solution
Complies with rigorous cybersecurity, process, requirements and testing standards

Addressable control panels

xDetect - Technical specifications

Small enclosures



xDetect is a 1 to 4 loop addressable fire alarm control panel featuring an instantly familiar, tablet-like user interface. Its adaptive touchscreen automatically changes colour in line with the fire system's status. The panel protects data and assets from hackers, ensuring secure communications, and has been designed with industry-leading levels of cybersecurity, making it future-ready for BMS and IoT connectivity.

xDetect panels' end-to-end design concept minimises time on-site, simplifying selection, installation, commissioning and service thanks to features such as error-proof colour coding and modular architecture. Installation and maintenance times and costs are reduced further by the xDetect ring design. This makes the use of a redundant network unnecessary, significantly reducing cabling and associated costs.

A scalable solution, the xDetect range is easy to expand and adapt in line with building owners' changing needs thanks to its modular system architecture. It can be upgraded effortlessly in line with changing standards and regulations through an intuitive, colour-coded scalable loop configuration with easy-to-swap system cards.

Large enclosures



Key features

- Flexible modular card based system with redundancy
- Fault tolerant ring network design with built in isolators
- Cybersecure – An Eaton secure-by-design solution
- 600mA Maximum current per loop
- Multi-language selection capability
- Powerful matrix based cause & effect programming with xDetectWorks programming software
- "Tablet like" 7" colour touchscreen
- Instantly familiar interface with high contrast colour coding that is simple to operate and learn
- Available in two sizes: Small (7 card frame) and large (12 card frame) enclosure options
- EN54-2, EN54-4 certified
- LPCB approved

Order codes

Control panels

Description	Model reference	Order code	Order code
Small	xDetect Addressable CIE Panel 2 Loop Enclosure	EFXD01020	EFXD01020
Small	xDetect Addressable CIE Panel 2 Loop Enclosure + 128 Zonal Indicator	EFXD01022	EFXD01022
Large	xDetect Addressable CIE Panel 4 Loop Enclosure	EFXD01040	EFXD01040
Large	xDetect Addressable CIE Panel 4 Loop Enclosure + 128 Zonal Indicator	EFXD01042	EFXD01042

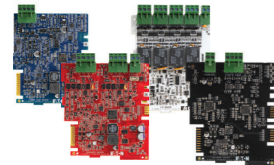
Cards & backplane options/spares

Description	Model reference	Order code
xDetect Loop Card 1L Protocol 800	EFXD05001	EFXD05001
xDetect Sounder Circuit Card 2 Outputs	EFXD05020	EFXD05020
xDetect Programmable I/O card	EFXD05030	EFXD05030
xDetect Network Card	EFXD05040	EFXD05040
xDetect CIE Int. Power Supply 150W	EFXD05051	EFXD05051
xDetect CIE Int. Dual PSE Backplane	EFXD05052	EFXD05052
xDetect CIE Int. Single PSE Backplane	EFXD05053	EFXD05053
xDetect Zonal Indicator Board – 128 Zonal Indicator	EFXD05060	EFXD05060
xDetect CIE Backplane Large Enclosure	EFXD05081	EFXD05081
xDetect CIE Backplane Small Enclosure	EFXD05082	EFXD05082

Panel door options

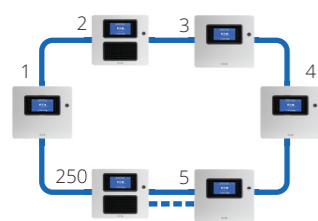
Description	Model reference	Order code
xDetect CIE Door Small HMI only	EFXD05091	EFXD05091
xDetect CIE Door Large HMI only	EFXD05092	EFXD05092
xDetect CIE Door Small 128 Zonal Indicator	EFXD05093	EFXD05093
xDetect CIE Door Large 128 Zonal Indicator	EFXD05094	EFXD05094
xDetect CIE Door Large 256 Zonal Indicator	EFXD05095	EFXD05095

Modular cards



- Colour coded cards
- Easy identification in the field
- Local status LEDs for each card
- Simple maintenance

Networked systems



A fault tolerant loop network means no loss of communication during a single fault, reducing cable costs across a maximum of 250 panels per network.



	EFXD01020	EFXD01022	EFXD01040	EFXD01042
Brand	Eaton	Eaton	Eaton	Eaton
Enclosure	Small	Small	Large	Large
HMI	7" Colour touchscreen	7" Colour touchscreen	7" Colour touch screen	7" Colour touchscreen
Zonal Indicator	None	128	None	128
Approval	EN54-2, EN54-4	EN54-2, EN54-4	EN54-2, EN54-4	EN54-2, EN54-4
Accreditation	LPCB 378q/01	LPCB 378q/03	LPCB 378q/02	LPCB 378q/04
Max. Zones (per CIE)	1000	1000	1000	1000
Number of Loops	1-2	1-2	1-4	1-4
Max. Length of Loops	2km	2km	2km	2km
Max. Load per Loop (Inputs & Outputs)	600mA	600mA	600mA	600mA
Max. No. of Addressable Points per Loop	200	200	200	200
Max. No. of Addressable Points per C.I.E	400	400	800	800
Max. No. of Alarming Devices per Loop Card (based upon beacon with 4.1mA current)	Up to 131	Up to 131	Up to 131	Up to 131
Max. No. of Alarming Devices per Sounder Card (based upon lowest operating current of RoLP)	Up to 106	Up to 106	Up to 106	Up to 106
Max. No. of Fire Alarm Devices per C.I.E	Up to 262 (requires 1 additional Loop card from standard)	Up to 262 (requires 1 additional Loop card from standard)	Up to 262 (with 1 PSU - requires 1 additional Loop card from standard) Up to 524 (with 2 PSUs - requires 1 additional PSU & 3 loop cards from standard)	Up to 262 (with 1 PSU - requires 1 additional Loop card from standard) Up to 524 (with 2 PSUs - requires 1 additional PSU & 3 loop cards from standard)
Pre-Fitted Cards	1x Gateway 1x Loop 1L Protocol 800	1x Gateway 1x Loop 1L Protocol 800	1x Gateway 1x Loop 1L Protocol 800	1x Gateway 1x Loop 1L Protocol 800
System Operating Voltage	20.4-28V (VBUS)	20.4-28V (VBUS)	20.4-28V (VBUS)	20.4-28V (VBUS)
Mains Input Supply	230Vac +10%, -15% 50/60Hz	230Vac +10%, -15% 50/60Hz	230Vac +10%, -15% 50/60Hz	230Vac +10%, -15% 50/60Hz
Standby Duration	Up to 24Hrs (Dependent on loop loading and battery configuration)	Up to 24Hrs (Dependent on loop loading and battery configuration)	Up to 24Hrs (Dependent on loop loading and battery configuration)	Up to 24Hrs (Dependent on loop loading and battery configuration)
Maximum Battery	2 x 12V dc (12Ah) (Batteries not included)	2 x 12V dc (12Ah) (Batteries not included)	4 x 12V dc (12Ah) (Batteries not included)	4 x 12V dc (12Ah) (Batteries not included)
Weight (without batteries)	8.4kg	8.3kg	11kg	10.9kg
Ingress Protection	IP30	IP30	IP30	IP30
Dimensions H x W x D - Product (mm)	374 x 426 x 148	374 x 426 x 148	527 x 433 x 148	527 x 433 x 148
Dimensions H x W x D - Packaged (mm)	630 x 500 x 310	630 x 500 x 310	630 x 500 x 310	630 x 500 x 310
Construction	1.5mm Mild Steel	1.5mm Mild Steel	1.5mm Mild Steel	1.5mm Mild Steel
Cable Entry	23x 20mm diameter at top 2x 20mm diameter on each side 2x 20mm diameter on bottom 1x Rectangular knockout at rear - W 284 X H 35 mm	23x 20mm diameter at top 2x 20mm diameter on each side 2x 20mm diameter on bottom 1x Rectangular knockout at rear - W 284 X H 35 mm	23 x 20mm diameter at top 4 x 20mm diameter on each side 2 x 20mm diameter on bottom 1x Rectangular knockout at rear - W 284 X H 35 mm	23 x 20mm diameter at top 4 x 20mm diameter on each side 2 x 20mm diameter on bottom 1x Rectangular knockout at rear - W 284 X H 35 mm
Operating Temperature	-5C to +50°C	-5C to +50°C	-5C to +50°C	-5C to +50°C
Humidity (non condensing)	95%	95%	95%	95%
Compatible with	Visit www.Eaton.com/xDetectCompatibleDevices to see the latest list of compatible peripherals			

Information is believed to be accurate, however no representation or warranty is given and Eaton assumes no liability with respect to the accuracy of such information. The information provided in this document is subject to change without notice.

Addressable control panels

xDetect Mini - product data sheet

Eaton



The xDetect Mini is a futureproof fire alarm control panel that combines powerful performance with a compact, discreet and aesthetically pleasing design. Fitting into the wider xDetect family, the Mini ensures compliance with the latest fire detection standards while noticeably reducing space and complexity, making it ideal for quick installation anywhere in a building. Backed by Eaton's secure-by-design credentials, xDetect Mini delivers reliable performance and scalability without compromising on security.

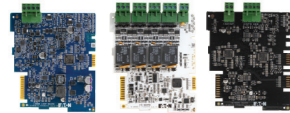
Every xDetect panel is carefully designed to minimise the time installers spend on-site, simplifying their selection, fitting, commissioning and service requirements through features such as errorproof colour coding and modular architecture. Errorproofing continues with support for loop networking; even without redundant lines, a single fault is stopped from disrupting system communication, thereby reducing cabling costs.

A scalable solution, each xDetect panel can easily expand and adapt in line with new legislation and building owners' changing needs. Color-coded modular cards quickly swap into the panel to enable fluid and intuitive upgrades.

Key features

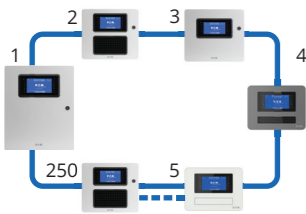
- Compact and scalable safety solution
- Flexible modular card based system with redundancy
- Fault tolerant ring network design with built in isolators
- Cybersecure – An Eaton secure-by-design solution
- 600mA Maximum current per loop
- Multi-language selection capability
- Innovative technology designed to work with familiar tools and peripherals
- Powerful matrix based cause & effect programming with xDetectWorks programming software
- "Tablet like" 7" colour touchscreen
- Instantly familiar interface with high contrast colour coding that is simple to operate and learn
- Natural upgrade for legacy CF2000 panels

Modular cards



- Colour coded cards
- Easy identification in the field
- Local status LEDs for each card
- Simple maintenance

Networked systems



A fault tolerant loop network means no loss of communication during a single fault, reducing cable costs across a maximum of 250 panels per network.

Order codes

Control panels

Description	Colour	Order code
xDetect Addressable CIE Mini Enclosure (1-2 Loops)	Grey	EFXD02002-G
xDetect Addressable CIE Mini Enclosure (1-2 Loops)	White	EFXD02002-W

Cards & backplane options/spares

Description	Colour	Order code
xDetect Mini Zonal Indicator Board – 32 Zonal Indicator	EFXD02051	EFXD02051
xDetect Mini CIE Int. Backplane with Gateway card	EFXD02052	EFXD02052
xDetect Mini CIE Int. Power Supply 75W	EFXD02053	EFXD02053
xDetect Loop Card 1L Protocol 800	EFXD05001	EFXD05001
xDetect Programmable I/O card	EFXD05030	EFXD05030
xDetect Network Card	EFXD05040	EFXD05040

EFXD02002

Brand	Eaton
HMI	7" Colour touchscreen
Zonal Indicator	32 (optional add-on)
Approval	EN54-2, EN54-4
Max. Zones (per CIE)	256
Number of Loops	1-2
Max. Length of Loops	2km
Max. Load per Loop (Inputs & Outputs)	600mA
Max. No. of Addressable Points per Loop	200
Max. No. of Addressable Points per C.I.E	400
Max. No. of Alarming Devices per Loop Card (based upon beacon with 4.1mA current)	Up to 131
Max. No. of Fire Alarm Devices per C.I.E	Up to 262 (requires 1 additional Loop card from standard)
Pre-Fitted Cards	1x Gateway 1x Loop 1L Protocol 800
System Operating Voltage	20.4-28V
Mains Input Supply	230V AC +10%, -15%, 60Hz
Standby Duration	Up to 24Hrs (Dependant on loop loading and battery configuration)
Maximum Battery	2 x 12V (9Ah) (Batteries not included)
Weight (without batteries)	2600g
Ingress Protection	IP30
Dimensions H x W x D - Product (mm)	270 x 360 x 116
Dimensions H x W x D - Packaged (mm)	325 x 385 x 200
Construction	Plastic
Cable Entry	12
Operating Temperature	-5°C to +40°C
Humidity (non condensing)	20-95%
Compatible with	Visit www.Eaton.com/xDetectCompatibleDevices to see the latest list of compatible peripherals



EFXD02002-W



EFXD02002-W with optional EFXD02051



EFXD02002-G



EFXD02002-G with optional EFXD02051


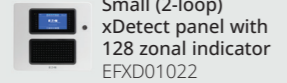

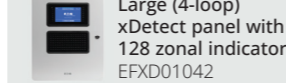
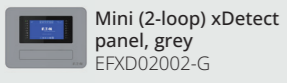
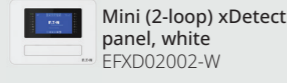
Addressable control panels

xDetect Mini – Technical specifications

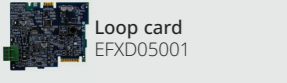
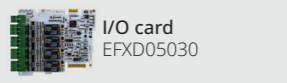
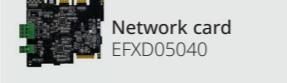
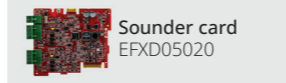
Peripheral compatibility guide

Control panels, system cards, spare parts & software

Control panels

 Small (2-loop) xDetect panel EFXD01020	 Small (2-loop) xDetect panel with 128 zonal indicator EFXD01022	 Large (4-loop) xDetect panel EFXD01040	 Large (4-loop) xDetect panel with 128 zonal indicator EFXD01042
 Mini (2-loop) xDetect panel, grey EFXD02002-G	 Mini (2-loop) xDetect panel, white EFXD02002-W		

Modular cards

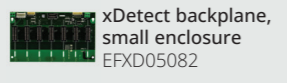
 Loop card EFXD05001	 I/O card EFXD05030	 Network card EFXD05040	 Sounder card EFXD05020
--	---	--	---

* Not compatible with xDetect Mini

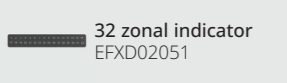
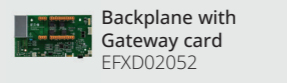
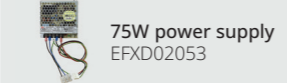
Spare parts - xDetect Large

 Large xDetect door, 128 zonal indicator EFXD05094	 Large xDetect door, 256 zonal indicator EFXD05095	 Large xDetect door, HMI only EFXD05092	 128 zonal indicator EFXD05060
 150W power supply EFXD05051	 xDetect dual PSE backplane EFXD05052	 xDetect backplane, large enclosure EFXD05081	

Spare parts - xDetect Small

 Small xDetect door, HMI only EFXD05091	 Small xDetect door, 128 zonal indicator EFXD05093	 128 zonal indicator EFXD05060	 150W power supply EFXD05051
 xDetect single PSE backplane EFXD05053	 xDetect backplane, small enclosure EFXD05082		

Spare parts - xDetect Mini

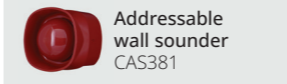

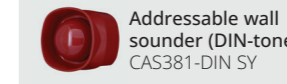


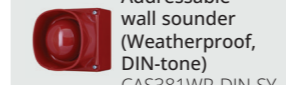
 32 zonal indicator EFXD02051	 Backplane with Gateway card EFXD02052	 75W power supply EFXD02053
---	--	--

Software

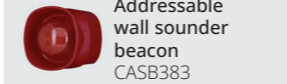
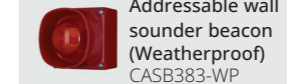
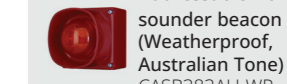
 Programming xDetectWorks	 Visualisation EFGVS
---	--

Signalling devices

Sounders

 Addressable wall sounder CAS381	 Addressable wall sounder (Australian Tone) CAS381AU	 Addressable wall sounder (DIN-tone) CAS381-DIN SY	 Addressable wall sounder (Weatherproof) CAS381WP
 Addressable wall sounder (Weatherproof, Australian Tone) CAS381AU-WP	 Addressable wall sounder (Weatherproof, DIN-tone) CAS381WP-DIN SY		


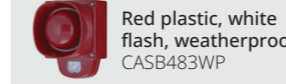
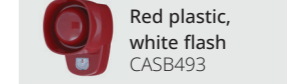

Sounder beacons

 Addressable wall sounder beacon CASB383	 Addressable wall sounder beacon (Australian Tone) CASB383AU	 Addressable wall sounder beacon (Weatherproof) CASB383-WP	 Addressable wall sounder beacon (Weatherproof, Australian Tone) CASB383AU-WP
--	--	--	---

Wall VADs

 Red plastic, red flash, deep base CAB482WD	 Red plastic, red flash, shallow base CAB482WS	 Red plastic, white flash, shallow base CAB492WS	 Red plastic, white flash, deep base CAB492WD
---	--	--	---

Wall sounder VADs

 Red plastic, red flash CASB483	 Red plastic, white flash, weatherproof CASB483WP	 Red plastic, white flash CASB493	 Red plastic, red flash, weatherproof CASB493WP
---	---	---	---

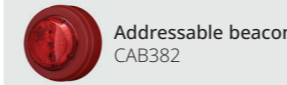
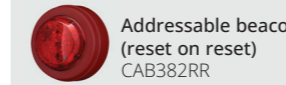
Wall sounder VADs - open class

 Red plastic, white flash, open class CASB393	 Red plastic, white flash, weatherproof, open class CASB393WP
---	---


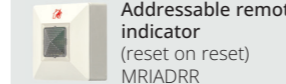
Ceiling VADs

 Red plastic, red flash, shallow base CAB482CS	 Red plastic, white flash, shallow base CAB492CS
--	--

Beacons

 Addressable beacon CAB382	 Addressable beacon (reset on reset) CAB382RR
--	---

Remote indicators

 Addressable remote indicator MRIAD	 Addressable remote indicator (reset on reset) MRIARR
---	---

Detectors

Speciality

 Reflective beam 5-50m MAB50R	 Reflective beam 5-50m (emerging market) MAB50R-EM	 Reflective beam 50-100m MAB100R	 Reflective beam 50-100m (emerging market) MAB100R-EM
--	--	---	---



Point

 Multi-mode heat CAH330	 Optical smoke CAP320	 Photo-thermal CAPT340
---	---	--


Sounder bases

 Addressable sounder base CAS380	 Addressable wall sounder (Australian Tone) CAS380AU	 Addressable sounder base (DIN-tone) CAS380-DIN
---	--	---


Sounder beacon bases

 Sounder beacon base CASBB384	 Sounder beacon base (bell tone) CASBB384-B
--	--


Sounder VAD base

 Open class, white flash CASBB394

Standard base




 Addressable detector base CAB300
--

Base sounder plate

 Sounder cover plate CASC

Call points

Manual call points

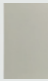
 Addressable manual call point CBG370S	 Addressable manual call point (Weatherproof) CBG370SWP	 Addressable manual call point (Weatherproof) CBG370WP
--	--	---

Interfaces







Micro

 Micro single channel output unit (reset on reset) MCOM-R	 Micro single channel output unit (sounder) MCOM-S	 Micro single channel output unit MCOM	 * Micro single channel output unit (fan controller) MCOM-FC
 Micro single channel input unit MCIM	 Micro zone monitor unit CIU872		


Micro enclosure

 Micro single channel unit enclosure ULBU

Mimic relay

 * Addressable loop mimic LED PCB (Master) ZPCB2252-MSL	 * Addressable loop mimic relay PCB (Master) ZPCB2252-MSR	 * Addressable loop mimic LED PCB (Slave) ZPCB2252-MSL	 * Addressable loop mimic relay PCB (Slave) ZPCB2252-MSR
 * 4 Way mimic relay board (4 in, 4 out) CIOP4	 * 8 Way mimic relay board (4 in, 8 out) CIOP8		


230V Relay

 230V Relay I/O unit CMIO353
--

3 channel I/O

 3 Channel I/O unit (reset on reset) CIO351	 3 Channel I/O unit (triple address) CIO351SST	 3 Channel I/O unit (reset on silence) CIO351S
--	---	---





4-Way controller

 ** 4-Way sounder controller CSC354CPR

4-20mA

 4-20mA interface CGI420	 4-20mA interface CIT420	 4-20mA interface with relay CIT420R
--	--	---

Fiber adaptors

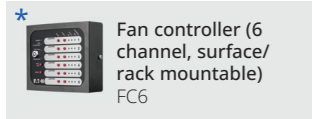
 Multi-mode RS485 fiber adaptor SC EFMM485	 Fiber Optic Converter RS485 ODW-730-F1	 Singlemode Transceiver SLC20-DDM	 Single mode RS485 fiber adaptor SC EFSM485
---	--	--	--

* Restrictions/limits apply

** Discontinued

Interfaces

Fan controllers

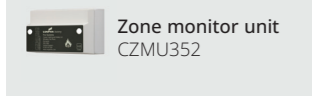


Fan controller (6 channel, surface/rack mountable) FC6

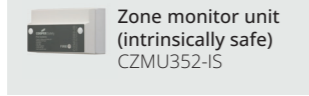


Fan Controller (18 Channel, 19" Rack Mount) FC18

Zone monitor units

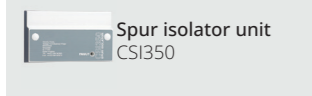


Zone monitor unit CZMU352



Zone monitor unit (intrinsically safe) CZMU352-IS

Spur



Spur isolator unit CSI350

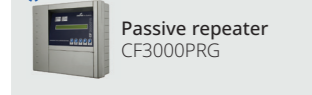
Door release



Door release module CIOP-7273

Repeaters

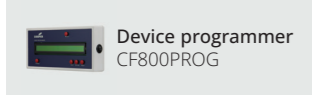
Repeater panels



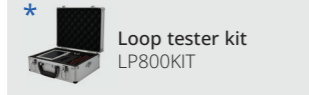
Passive repeater CF3000PRG

Accessories

Installation accessories



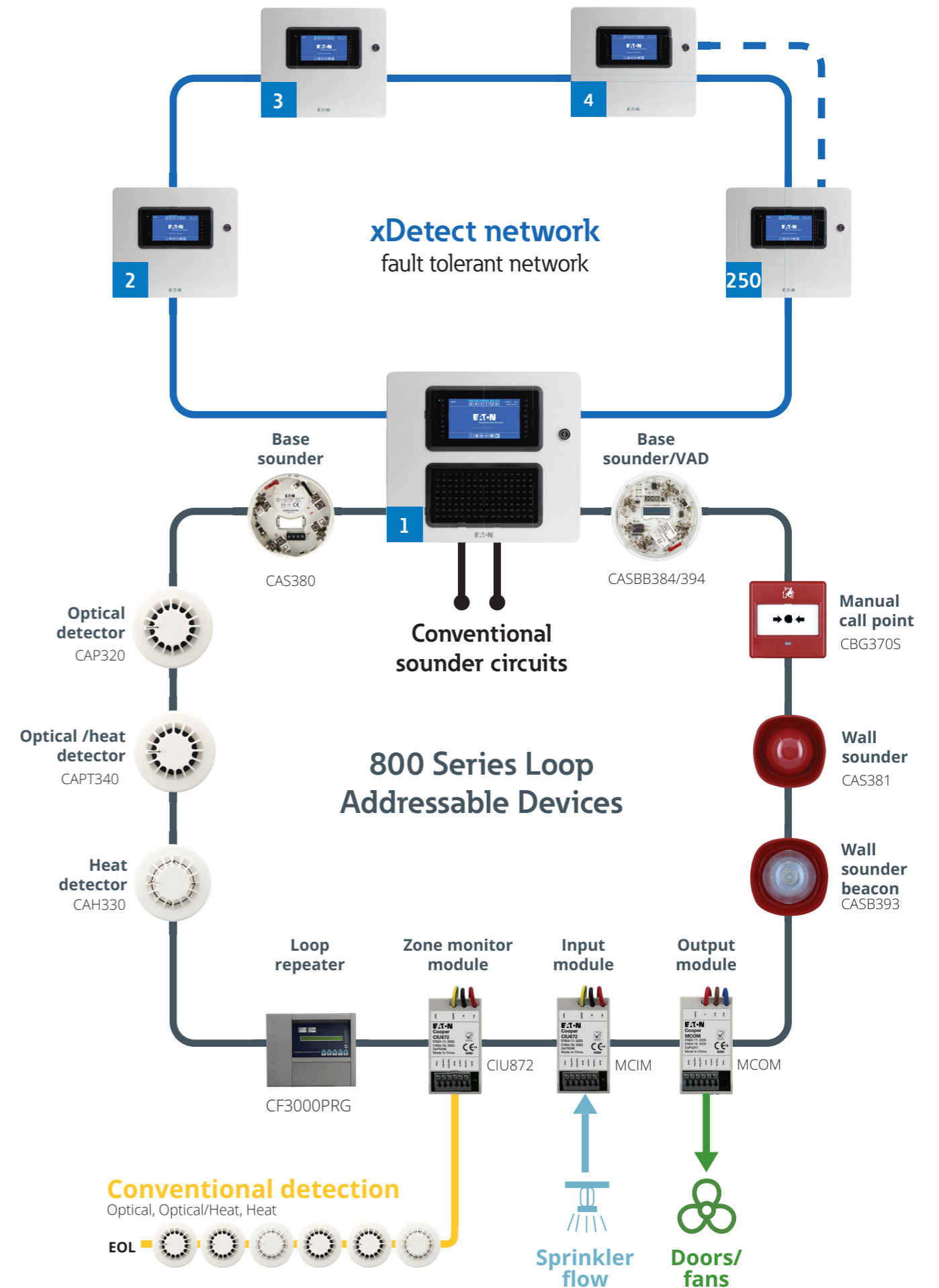
Device programmer CF800PROG



Loop tester kit LP800KIT

* Restrictions/limits apply

Example complete system





- * At Eaton, we're continually implementing safer processes to protect employees (yours and ours), educating our customers and partners on best practices and engineering solutions to create a safer world for everyone. Because when it comes to safety, there's no taking time off.

See more at [Eaton.com/WhatMatters](https://www.eaton.com/WhatMatters)

Eaton
Electrical Sector EMEA
Route de la Longeraie 7
1110 Morges, Switzerland

Eaton Electrical Products Ltd
Llantarnam Park
Cwmbran, NP44 3AW
United Kingdom
www.eaton.com

© 2021 - 2026 Eaton
All rights reserved
Publication No. BR450043EN
April 2026

Information is believed to be accurate, however no representation or warranty is given and Eaton assumes no liability with respect to the accuracy of such information. The information provided in this document is subject to change without notice.

Eaton is a registered trademark.

All other trademarks are property of their respective owners

Follow us on social media to get the latest product and support information.

