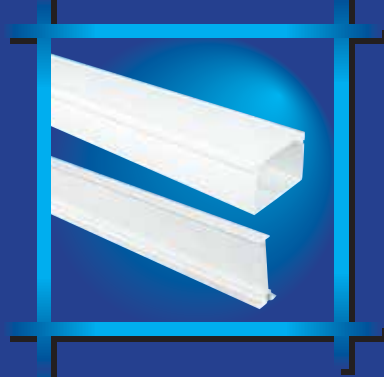


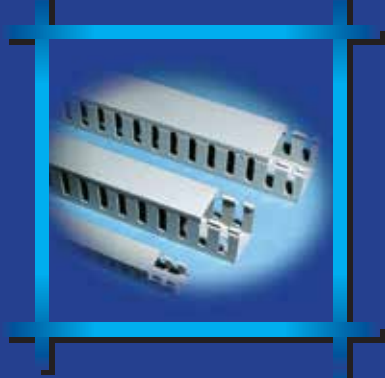


DECONDUCT®

CABLE MANAGEMENT SYSTEMS



PERIMETER SYSTEMS



MINI & MAXI TRUNKING SYSTEMS



PANEL TRUNKING

CONDUIT SYSTEMS



METAL MOUNTING BOXES



Intertek



ASTA Licence

This Licence authorises use of the

ASTA Diamond Mark

Licence No. 652

The ASTA Diamond Mark is a symbol of electrical safety. It provides evidence for customers and authorities that Intertek has independently tested and certified the product's compliance to applicable safety standards, also that Intertek monitors production and testing to ensure subsequent product continues to comply with stated standards.

This Licence is valid until the review date of either: if the Approval Standard or otherwise withdrawn by the Current validity status can be confirmed by contacting:

Helen Hooke
Corporate Street,
Rugby, CV21 2DR
United Kingdom
Tel: +44 (0)1788 578435
www.asta@intertek.com

Details of Approved variants, components and sites are given on Endorsements to this Licence (2 pages)

Organisation:
Interplast Company Limited
Cable Management Systems Section
P.O. Box 4679, Sharjah, United Arab Emirates

Product:
Designation: Insulating Conduit and Fittings
Colour(s): Decoduct 20 & 25mm
Non-metallic: White alternatively Black
Plain: Classification coding: 4421230 n/a 410
IP 30: With electrical insulating characteristics
Approval Standard: Non-flame propagating
BS EN 61386-21: 2004

Issue number: 4
Review date:
Factory Reference: LQ-432

Intertek

Certificate of Registration



Certificate Number
48722
Initial Certification Date
13 March 2000
Certificate Issue Date
1 July 2012

The following organization's quality management system has been assessed and registered by Intertek Certification AB as conforming to the requirements of:

ISO 9001:2008

Organization:

Interplast Company Ltd, Cable Management Systems

Main site: P.O.Box 4679, Industrial Area 1, Sharjah, United Arab Emirates

Additional site: P.O.Box 50488, Dubai Investment Park, Dubai, United Arab Emirates

The Quality Management System is applicable to:

Design and production of cable management system.

In the issuance of this certificate, Intertek assumes no liability to any party other than to the Client, and then only in accordance with the agreed upon Certification Agreement.



Magnus Molin
Magnus Molin, CEO
Intertek Certification AB - Kista (Stockholm), Sweden





CONTENTS

PAGE

**PERIMETER SYSTEMS - CAT : 6, CAT : 5 DADO
SKIRTING & COVING TRUNKING**

4 - 23

MINI & MAXI TRUNKING SYSTEMS

24 - 33

PANEL TRUNKING

34 - 37

CONDUIT SYSTEMS

38 - 61

METAL MOUNTING BOXES

62 - 66

TECHNICAL SPECIFICATIONS

67 - 78



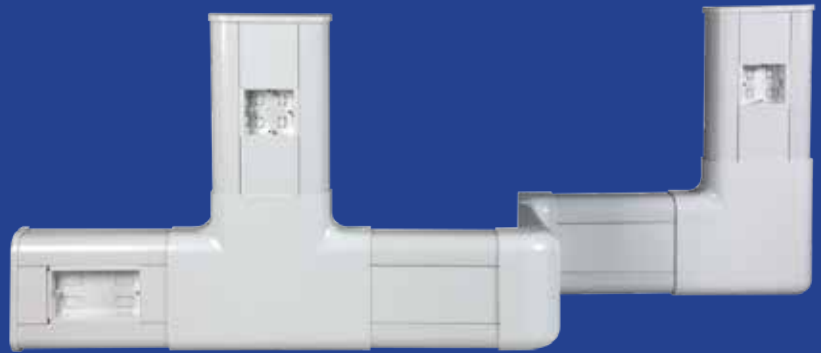
TRUNCK

PERIMETER SYSTEMS - CAT: 6, CAT: 5
DADO, SKIRTING & COVING TRUNKING

MANUFACTURED IN ACCORDANCE WITH
BRITISH STANDARDS BS EN: 50085-2-1

PERIMETER SYSTEMS

CAT : 6 - DADO TRUNKING



CAT : 5 - DADO TRUNKING



SKIRTING TRUNKING



COVING TRUNKING



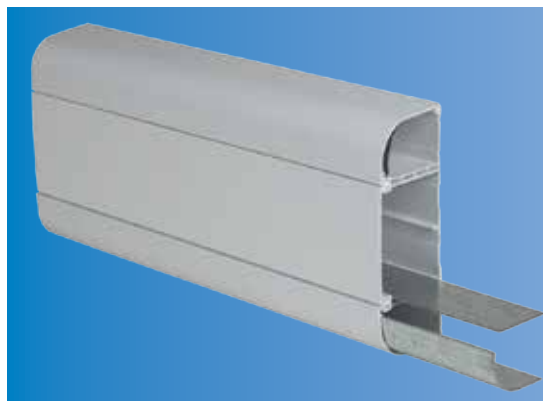


DECODUCT[®]

CABLE MANAGEMENT SYSTEMS

CAT: 6 - DADO Trunking & Fittings

PERIMETER SYSTEMS



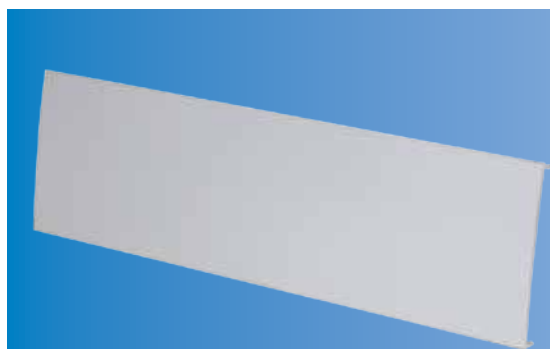
FULL PROFILE (BASE & LIDS)

Item code	Standard packs	Bulk packs
DTC6-PRF1	2 x 3 Mtr	-



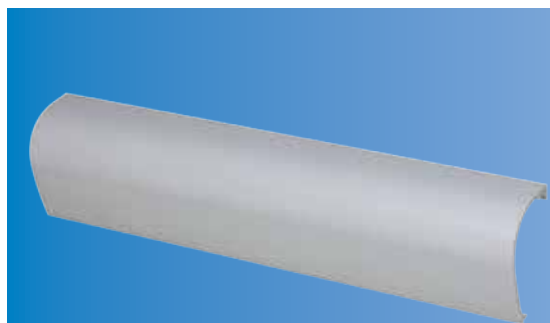
BASE

Item code	Standard packs	Bulk packs
DTC6 BU	2 x 3 Mtr	-



CENTRE LID

Item code	Standard packs	Bulk packs
DTC6 CL	2 x 3 Mtr	-



ANGLE LID

Item code	Standard packs	Bulk packs
DTC6 AL	2 x 3 Mtr	-

CAT: 6 - DADO Trunking & Fittings

Standard Size : 180 mm x 62 mm
 Standard Length : 3 Metre, Alternative Lengths can be shipped to order.
 Standard Colour : White



INTERNAL BEND

Item code	Standard packs	Bulk packs
DTC6 IB	5	60



EXTERNAL CORNER COVER

Item code	Standard packs	Bulk packs
DTC6 EBC	2	60



EXTERNAL CORNER SEPERATOR

Item code	Standard packs	Bulk packs
DTC6 EBS	2	250



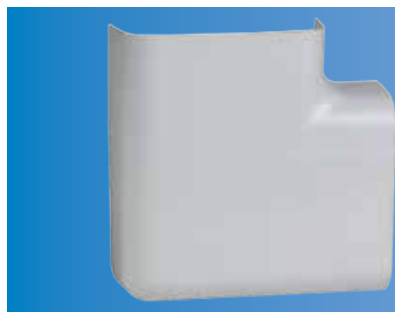
COUPLER

Item code	Standard packs	Bulk packs
DTC6 C1	5	200



END CAP L/R (Set)

Item code	Standard packs	Bulk packs
DTC6 EC	5 Set	250 Set



FLAT ANGLE COVER

Item code	Standard packs	Bulk packs
DTC6 FAC	2	30



FLAT ANGLE BASE

Item code	Standard packs	Bulk packs
DTC6 FAB	2	50



FLAT TEE COVER

Item code	Standard packs	Bulk packs
DTC6 FTC	2	26



FLAT TEE SEPARATOR

Item code	Standard packs	Bulk packs
DTC6 FTS	2	50



FLAT TEE BASE

Item code	Standard packs	Bulk packs
DTC6 FTB	2	50

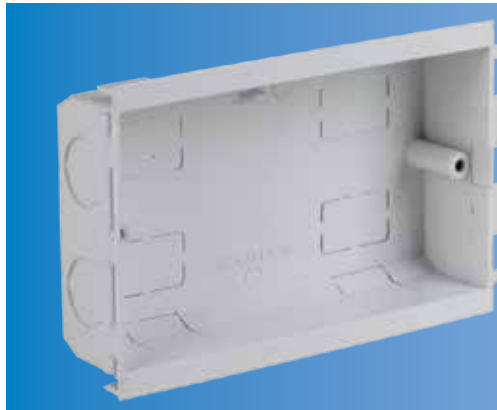


CAT: 6 - DADO Trunking & Fittings



1 GANG BOX

Item code	Standard packs	Bulk packs
DTC6 SBI	20 Pcs	320 Pcs



2 GANG BOX

Item code	Standard packs	Bulk packs
DTC6 SB2	10 Pcs	160 Pcs



DECODUCT®

CABLE MANAGEMENT SYSTEMS

CAT: 5 - DADO Trunking & Fittings Symphony

PROFILE: 1

PERIMETER SYSTEMS



BASE

Item code	Standard packs	Bulk packs
DP1 BU1 0	2 x 2.9 Mtr	-



CHAMFERED LID (TOP)

Item code	Standard packs	Bulk packs
DP1 BL1 0	2 x 2.9 Mtr	-



CENTRE LID

Item code	Standard packs	Bulk packs
DP1 CL1 0	2 x 2.9 Mtr	-



CHAMFERED LID (BOTTOM)

Item code	Standard packs	Bulk packs
DP1 BL1 0	2 x 2.9 Mtr	-



INTERNAL BEND (Set)

Item code	Standard packs	Bulk packs
DP1 IB1	5 Sets	200 Sets

Standard Size : 160 mm x 50 mm
 Standard Length : 2.9 metre. Alternative lengths can be supplied to order
 Standard Set : 3 pieces (for internal bend, external bend & Coupler) and a pair for end cap
 Standard Colour: White. Other finishes, designs and colours are available on request



EXTERNAL BEND (Set)

Item code	Standard packs	Bulk packs
DP1 EB1	5 Sets	130 Sets



COUPLER (Set)

Item code	Standard packs	Bulk packs
DP1 C1	5 Sets	200 Sets



END CAP L/R (Set)

Item code	Standard packs	Bulk packs
DP1 EC1L/R	5 Sets	200



FLAT ANGLE

Item code	Standard packs	Bulk packs
DP1 FA1	1 Set	-



FLAT TEE

Item code	Standard packs	Bulk packs
DP1 FT1	1 Set	-



DECODUCT®

CABLE MANAGEMENT SYSTEMS

CAT: 5 - DADO Trunking & Fittings Signature

PROFILE: 2

PERIMETER SYSTEMS



BASE

Item code	Standard packs	Bulk packs
DP2 BU2 0	2 x 2.9 Mtr	-



CHAMFERED LID (TOP)

Item code	Standard packs	Bulk packs
DP2 BL2 0	2 x 2.9 Mtr	-



CENTRE LID

Item code	Standard packs	Bulk packs
DP2 CL2 0	2 x 2.9 Mtr	-



ANGLE LID (BOTTOM)

Item code	Standard packs	Bulk packs
DP2 AL2 0	2 x 2.9 Mtr	-



INTERNAL BEND (Set)

Item code	Standard packs	Bulk packs
DP2 IB2	5 Sets	200 Sets

CAT: 5 - DADO Trunking & Fittings Signature

PROFILE: 2

Standard Size : 160 mm x 50 mm
 Standard Length: 2.9 metre. Alternative lengths can be supplied to order
 Standard Set : 3 pieces (for internal bend, external bend & Coupler) and a pair for end cap
 Standard Colour: White. Other finishes, designs and colours are available on request



EXTERNAL BEND (Set)

Item code	Standard packs	Bulk packs
DP2 EB2	5 Sets	130 Sets



COUPLER (Set)

Item code	Standard packs	Bulk packs
DP2 C2	5 Sets	200 Sets



END CAP L/R (Set)

Item code	Standard packs	Bulk packs
DP2 EC2 L/R	5 Sets	200 Sets



FLAT ANGLE UP/DOWN

Item code	Standard packs	Bulk packs
DP2 FA2 U/D	1 Set	-



FLAT TEE UP/DOWN

Item code	Standard packs	Bulk packs
DP2 FT2 U/D	1 Set	-



DECODUCT®

CABLE MANAGEMENT SYSTEMS

CAT: 5 - DADO Trunking & Fittings Harmony

PROFILE: 3

PERIMETER SYSTEMS



BASE

Item code	Standard packs	Bulk packs
DP3 BU3 0	2 x 2.9 Mtr	-



ANGLE LID (TOP)

Item code	Standard packs	Bulk packs
DP3 AL3 0	2 x 2.9 Mtr	-



CENTRE LID

Item code	Standard packs	Bulk packs
DP3 CL3 0	2 x 2.9 Mtr	-



CHAMFERED LID (BOTTOM)

Item code	Standard packs	Bulk packs
DP3 BL3 0	2 x 2.9 Mtr	-



INTERNAL BEND (Set)

Item code	Standard packs	Bulk packs
DP3 IB3	5 Sets	200 Sets

Standard Size : 160 mm x 50 mm
 Standard Length: 2.9 metre. Alternative lengths can be supplied to order
 Standard Set : 3 pieces (for internal bend, external bend & coupler) and a pair for end cap
 Standard Colour: White. Other finishes, designs and colours are available on request



EXTERNAL BEND (Set)

Item code	Standard packs	Bulk packs
DP3 EB3	5 Sets	130 Sets



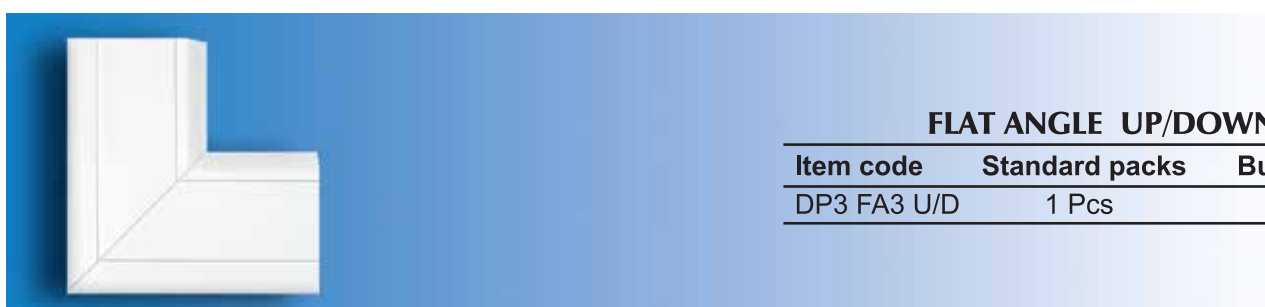
COUPLER (Set)

Item code	Standard packs	Bulk packs
DP3 C3	5 Sets	200 Sets



END CAP L/R (Set)

Item code	Standard packs	Bulk packs
DP3 EC3 L/R	5 Sets	200 Sets



FLAT ANGLE UP/DOWN

Item code	Standard packs	Bulk packs
DP3 FA3 U/D	1 Pcs	-



FLAT TEE UP/DOWN

Item code	Standard packs	Bulk packs
DP3 FT3 U/D	1 Pcs	-



DECODUCT®

CABLE MANAGEMENT SYSTEMS

CAT: 5 - DADO Trunking & Fittings Chorus

PROFILE: 4

PERIMETER SYSTEMS



BASE UNIT

Item code	Standard packs	Bulk packs
DP4 BU4 0	2 x 2.9 Mtr	-



ANGLE LID (TOP)

Item code	Standard packs	Bulk packs
DP4 AL4 0	2 x 2.9 Mtr	-



CENTRE LID

Item code	Standard packs	Bulk packs
DP4 CL4 0	2 x 2.9 Mtr	-



ANGLE LID (BOTTOM)

Item code	Standard packs	Bulk packs
DP4 AL4 0	2 x 2.9 Mtr	-



INTERNAL BEND (SET)

Item code	Standard packs	Bulk packs
DP4 IB4 0	5 Sets	200

CAT: 5 - DADO Trunking & Fittings Chorus **PROFILE: 4**

Standard Size : 160 mm x 50 mm
 Standard Length: 2.9 metre. Alternative lengths can be supplied to order
 Standard Set : 3 pieces (for internal bend, external bend & coupler) and a pair for end cap
 Standard Colour: White. Other finishes, designs and colours are available on request



EXTERNAL BEND (SET)

Item code	Standard packs	Bulk packs
DP4 EB4	5 Sets	130



COUPLER (SET)

Item code	Standard packs	Bulk packs
DP4 C4	5 Sets	200



END CAP L/R (SET)

Item code	Standard packs	Bulk packs
DP4 EC4 L/R	5 Sets	200



FLAT ANGLE

Item code	Standard packs	Bulk packs
DP4 FA4	1 Pcs	-



FLAT TEE

Item code	Standard packs	Bulk packs
DP4 FT4	1 Pcs	-



DECODUCT[®]

CABLE MANAGEMENT SYSTEMS

CAT: 5 - DADO Trunking - Standard Flush Switch and Socket Boxes

PERIMETER SYSTEMS



1 GANG

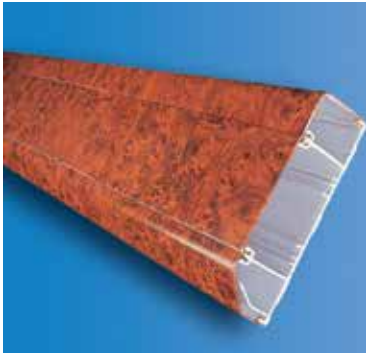
Item code	Size (mm)	Depth	Standard packs	Bulk packs
D P 1SB	87 x 87	30mm	20 Pcs	320 Pcs



2 GANG

Item code	Size (mm)	Depth	Standard packs	Bulk packs
D P 2SP	87 x 147	30mm	10 Pcs	160 Pcs

CAT: 5 - DADO Trunking - Decorative Finishes



WOOD BURL

Item codes for profiles and accessories should be suffixed with /WB.
eg. for bevelled lid of profile 2 - to read as DP2 BL2 0/WB



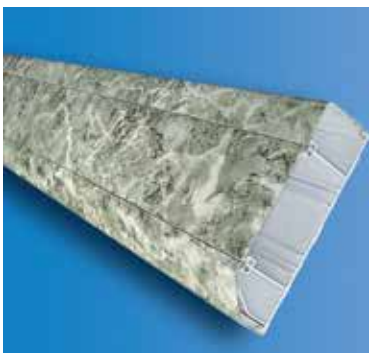
WOOD GRAIN

Item codes for profiles and accessories should be suffixed with /WG.
eg. for bevelled lid of profile 2 - to read as DP2 BL2 0/WG



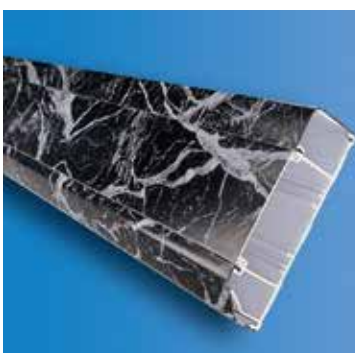
WHITE MARBLE

Item codes for profiles and accessories should be suffixed with /WM.
eg. for bevelled lid of profile 2 - to read as DP2 BL2 0/WM



GREEN MARBLE

Item codes for profiles and accessories should be suffixed with /GM.
eg. for bevelled lid of profile 2 - to read as DP2 BL2 0/GM



BLACK MARBLE

Item codes for profiles and accessories should be suffixed with /BM.
eg. for bevelled lid of profile 2 - to read as DP2 BL2 0/BM



DECODUCT[®]

CABLE MANAGEMENT SYSTEMS

Skirting Trunking System



- 3 compartment mini skirting trunking suitable for commercial and domestic use.
- An unobtrusive and aesthetically designed system.
- Three compartments segregate power, data and communication cabling.
- Purpose designed accessory box adaptor, which overlaps the trunking allowing tolerance for on site cutting.
- High impact resistant and sleek system designed as a neat and economical skirting.
- Choice of custom decorative designs (eg. wood burl, wood grain and marble) and colours are available. Ask for design and colour database.

Options : White. Other colours are available upon request • Standard length 2.9 meters

Skirting Trunking Systems



SKIRTING TRUNKING (3 compartments)

Item code	Size (mm)	Standard packs		Bulk packs
		Pcs	Mtrs	
DSKT 1	100 x 25	2	5.8	-



EXTERNAL BEND

Item code	Standard packs	Bulk packs
DSKEB 1	10	400



INTERNAL BEND

Item code	Standard packs	Bulk packs
DSKIB 1	10	550



ACCESSORY BOX MOUNTING ADAPTOR


Item code	Standard packs	Bulk packs
DSKA 1	10	160



DECODUCT[®]


CABLE MANAGEMENT SYSTEMS

Skirting Trunking Fittings




COUPLER

Item code	Standard packs		Bulk packs
DSKC 1	50	10 Pcs	2000



END CAPS

Item code	Standard packs		Bulk packs
DSKEC 1/R	100	10 Pcs	4000
DSKEC 1/L	100	10 Pcs	4000



CABLE RETAINER

Item code	Standard packs		Bulk packs
DSKCR 1	100	10 Pcs	4000

Decorative Finishes



Wood Burl



Wood Grain



White Marble



Green Marble

Other finishes and designs are available on request

Options : White. Other colours are available upon request • Standard length 2.9 meters

Ceiling Coving Trunking

Standard Size : 127 mm x 127 mm

Standard Length: 2.9 metre. Alternative lengths can be supplied to order



COVING TRUNKING

Item code	Standard packs	Bulk packs
DCT 127	2 x 2.9 Mtr	-



EXTERNAL BEND

Item code	Standard packs	Bulk packs
DCEB	2	-



INTERNAL BEND

Item code	Standard packs	Bulk packs
DCIB	2	-



COUPLER

Item code	Standard packs	Bulk packs
DCC	6	-



END CAP

Item code	Standard packs	Bulk packs
DCEC	2	-



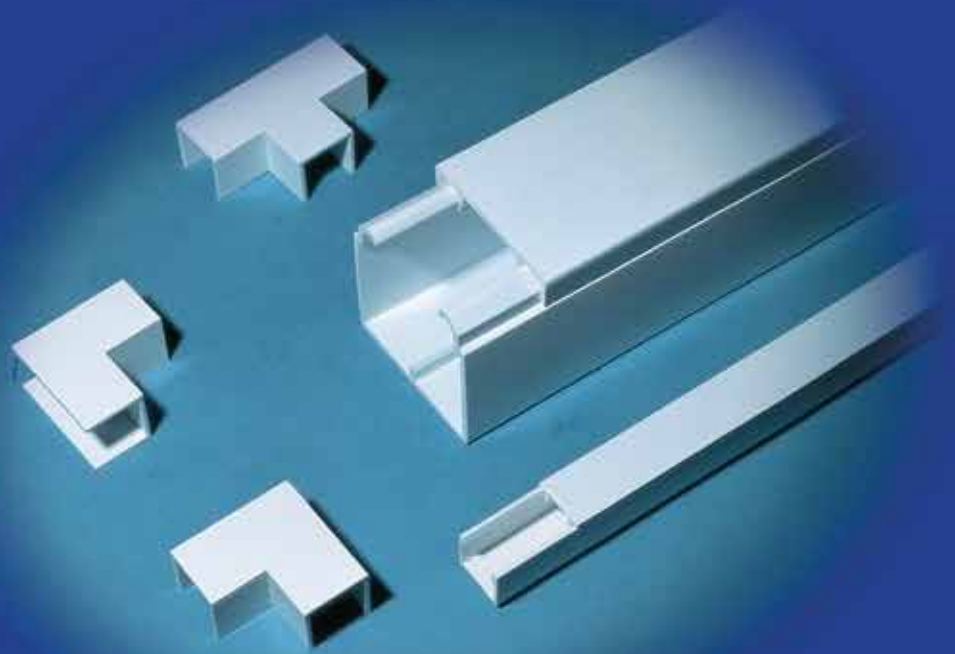
DECODUCT

MANUFACTURED IN ACCORDANCE WITH
BRITISH STANDARDS

Trunking & Fittings : BS EN 50085

Mini Trunking Switch
& Socket Boxes : BS 5733
BS 4662

MINI & MAXI TRUNKING SYSTEMS





DECODUCT[®]

CABLE MANAGEMENT SYSTEMS

Mini Trunking System

DECODUCT Mini Trunking System is manufactured from high impact uPVC compound to withstand harsh environments. Clip-on lid provides security while at the same time is easy to remove. Available in self fixing form with self fix tape for rapid and easy installation.



MICRO TRUNKING

Item code	Size (mm)	Standard packs		Bulk packs
		Pcs	Mtrs	
DMT 0	12 x 8	50	145	-



MINI TRUNKING

Item code	Size (mm)	Standard packs		Bulk packs
		Pcs	Mtrs	
DMT 1	16 x 16	30	87.0	-
DMT 2	25 x 16	20	58.0	-
DMT 3	38 x 16	20	58.0	-
DMT 4	38 x 25	15	43.5	-
DMT 5	38 x 38	8	23.2	-



TWIN COMPARTMENT TRUNKING

Item code	Size (mm)	Standard packs		Bulk packs
		Pcs	Mtrs	
DMT 3C	38 x 16	20	58	-



SELF FIX MINI TRUNKING

Item code	Size (mm)	Standard packs		Bulk packs
		Pcs	Mtrs	
DMT 0SF	12 x 8	50	145	-
DMT 1SF	16 x 16	30	87.0	-
DMT 2SF	25 x 16	20	58.0	-
DMT 3SF	38 x 16	20	58	-
DMT 4SF	38 x 25	15	43.5	-
DMT 5SF	38 x 38	8	23.2	-

• To be used on dust free surface • Peel off backing film in small lengths at a time
• Position trunking accurately and press to clean surface

Options : Standard length 2.9metres in white. Other lengths and colours are available upon request.

Mini Trunking Fittings

DECODUCT Mini Trunking Fittings are designed to snap on to the trunking to provide a secure and aesthetic finish.



COUPLERS

Item code	Size (mm)	Standard packs	Bulk packs
DMNC 1	16 x 16	10	-
DMNC 2	25 x 16	10	-
DMNC 3	38 x 16	10	-
DMNC 4	38 x 25	10	-
DMNC 5	38 x 38	10	-



SURFACE BOX ADAPTORS

Item code	Size (mm)	Standard packs	Bulk packs
DMNA 1	16 x 16	10	-
DMNA 2	25 x 16	10	-



END CAPS

Item code	Size (mm)	Standard packs	Bulk packs
DMEC 1	16 x 16	10	-
DMEC 2	25 x 16	10	-
DMEC 3	38 x 16	10	-
DMEC 4	38 x 25	10	-
DMEC 5	38 x 38	10	-



INSIDE ANGLE

Item code	Size (mm)	Standard packs	Bulk packs
DMAI 1	16 x 16	10	-
DMAI 2	25 x 16	10	-
DMAI 3	38 x 16	10	-
DMAI 4	38 x 25	10	-
DMAI 5	38 x 38	10	-

Options : White. Other colours are available upon request



DECODUCT®

CABLE MANAGEMENT SYSTEMS

Mini Trunking Fittings

DECODUCT Mini Trunking Fittings are designed to snap on to the trunking to provide a secure and aesthetic finish.



OUTSIDE ANGLE

Item code	Size (mm)	Standard packs	Bulk packs
DMAO 1	16 x 16	10	-
DMAO 2	25 x 16	10	-
DMAO 3	38 x 16	10	-
DMAO 4	38 x 25	10	-
DMAO 5	38 x 38	10	-



FLAT ANGLE

Item code	Size (mm)	Standard packs	Bulk packs
DMAF 1	16 x 16	10	-
DMAF 2	25 x 16	10	-
DMAF 3	38 x 16	10	-
DMAF 4	38 x 25	10	-
DMAF 5	38 x 38	10	-



FLAT TEE

Item code	Size (mm)	Standard packs	Bulk packs
DMTF 1	16 x 16	10	-
DMTF 2	25 x 16	10	-
DMTF 3	38 x 16	10	-
DMTF 4	38 x 25	10	-
DMTF 5	38 x 38	10	-

Options : White. Other colours are available upon request

Mini Trunking Mounting Boxes

Fitted with M3.5 brass inserts. Earth terminal facility. Fixing centres 60.3mm for single gang and 120.6mm for twin gang boxes



TWIN GANG SURFACE MOUNTING BOX

Item code	DST2/A	Standard packs	Bulk packs
Type	with K.O.	10 Pcs	120
Size	87 x 147mm		
Depth	32mm		
Entries	For DMT2 LH,RH and centre entry		
Std Packs	10		



TWIN GANG SURFACE MOUNTING BOX

Item code	DST2/B	Standard packs	Bulk packs
Type	with K.O.	10 Pcs	120
Size	87 x 147mm		
Depth	32mm		
Entries	For DMT3 LH,RH and centre entry		
Std Packs	10		



TWIN GANG SURFACE MOUNTING BOX

Item code	DST2/C	Standard packs	Bulk packs
Type	with K.O.	10 Pcs	120
Size	87 x 147mm		
Depth	32mm		
Entries	For DMT1 and DMT2		
Std Packs	10		



TWIN GANG SURFACE MOUNTING ACCESSORY BOX

Item code	DST2	Standard packs	Bulk packs
Type	Plain	10 Pcs	120
Size	87 x 147mm		
Depth	32mm		
Std Packs	10		

Options : White. Other colours are available upon request



Mini Trunking Mounting Boxes

Fitted with M3.5 brass inserts. Earth terminal facility. Fixing centres 60.3mm for single gang and 120.6mm for twin gang boxes



SINGLE GANG SURFACE MOUNTING BOX

Item code	DSO2/A	Standard packs	Bulk packs
Type	with K.O.	20 Pcs	240
Size	87 x 87mm		
Depth	32mm		
Entries	For DMT1 and DMT2 LH, RH and centre entry		
Std Packs	20		



SINGLE GANG SURFACE MOUNTING BOX

Item code	DSO2/B	Standard packs	Bulk packs
Type	with K.O.	20 Pcs	240
Size	87 x 87mm		
Depth	32mm		
Entries	For DMT3 LH, RH and centre entry		
Std Packs	20		



SINGLE GANG SURFACE MOUNTING BOX

Item code	DSO2/C	Standard packs	Bulk packs
Type	with K.O.	20 Pcs	240
Size	87 x 87mm		
Depth	32mm		
Entries	For DMT1 and DMT2		
Std Packs	20		



SINGLE GANG SURFACE MOUNTING BOX

Item code	DSO2	Standard packs	Bulk packs
Type	Plain	20 Pcs	240
Size	87 x 87mm		
Depth	32mm		
Std Packs	20		

Options : White. Other colours are available upon request



Maxi Trunking System

DECODUCT Maxi Trunking System design is robust and built to last as it is manufactured from a super high impact uPVC compound to withstand the most harsh working environments. Its design has been improved with security in mind and at the same time giving the convenience to segregate cables by using the new clip-in dividers for all seven sizes



MAXI TRUNKING

Item code	Size (mm)	Standard packs		Bulk packs
		Pcs	Mtrs	
DXT 1	50 x 50	8	23.2	-
DXT 2	75 x 50	4	11.6	-
DXT 3	75 x 75	4	11.6	-
DXT 5	100 x 100	2	5.8	-
DXT 6	150 x 100	2	5.8	-



MAXI TRUNKING

Item code	Size (mm)	Standard packs		Bulk packs
		Pcs	Mtrs	
DXT 4/A	100 x 40	4	11.6	-
DXT 4	100 x 50	4	11.6	-

DXT 4 & DXT4/A fitted with dividing fillet DDF1 for segregation of Data, Power and Communication cables along with DXT B1 & DXT B2 accessory box



DIVIDING FILLET

Item code	Size (mm)	Standard packs		Bulk packs
		Pcs	Mtrs	
DDF 0	40 for use with use DXT4/A	10	29	-
DDF 1	50 for use with DXT1, DXT2, & DXT4	10	29	-
DDF 2	75 for use with DXT3	10	29	-
DDF 3	100 for use with DXT5, DXT6	10	29	-

Options : White. Other colours are available upon request. • Standard length 2.9meters



Maxi Trunking Fittings

Maxi Trunking Fittings are available both moulded and fabricated to the highest precision so as to suit the trunking profiles allowing secured, quick and easy installations.



1 & 2 GANG MAXI TRUNKING FLUSH ACCESSORY BOX

Item code	Size (mm)	Depth	Standard packs	Bulk packs
DXT B1	87 X 87 X 25	30mm	20	320
DXT B2	87 X 147 X 25	30mm	10	160

•Suitable for installation with DXT4/A and DXT4



STRAIGHT COUPLER

Item code	Size (mm)		Standard packs	Bulk packs
DSC 1	50 x 50	(Moulded)	2	-
DSC 2	75 x 50	(Moulded)	2	-
DSC 3	75 x 75	(Moulded)	2	-
DSC 4/A	100 x 40	(Moulded)	2	-
DSC 4	100 x 50	(Moulded)	2	-



INTERNAL COUPLER

Item code	Size (mm)		Standard packs	Bulk packs
DIC 1	50 x 50	(Fabricated)	10	-
DIC 2	75 x 50	(Fabricated)	10	-
DIC 3	75 x 75	(Fabricated)	10	-
DIC 4/A	100 x 40	(Fabricated)	10	-
DIC 4	100 x 50	(Fabricated)	10	-
DIC 5	100 x 100	(Fabricated)	10	-
DIC 6	150 x 100	(Fabricated)	10	-



END CAP

Item code	Size (mm)		Standard packs	Bulk packs
DMXEC 1	50 x 50	(Moulded)	10	-
DMXEC 2	75 x 50	(Moulded)	10	-
DMXEC 3	75 x 75	(Moulded)	10	-
DMXEC 4/A	100 x 40	(Moulded)	10	-
DMXEC 4	100 x 50	(Moulded)	10	-
DMXEC 5	100 x 100	(Moulded)	10	-
DMXEC 6	150 x 100	(Moulded)	10	-



INSIDE ANGLE

Item code	Size (mm)		Standard packs	Bulk packs
DAI 1	50 x 50	(Moulded)	2	-
DAI 2	75 x 50	(Moulded)	2	-
DAI 3	75 x 75	(Moulded)	2	-
DAI 4/A	100 x 40	(Moulded)	2	-
DAI 4	100 x 50	(Moulded)	2	-
DAI 5	100 x 100	(Fabricated)	2	-
DAI 6	150 x 100	(Fabricated)	2	-

Options : White. Other colours are available upon request

Maxi Trunking Fittings



FLAT ANGLE

Item code	Size (mm)	Standard packs	Bulk packs
DAF 1	50 x 50 (Moulded)	2	-
DAF 2	75 x 50 (Moulded)	2	-
DAF 3	75 x 75 (Moulded)	2	-
DAF 4/A	100 x 40 (Moulded)	2	-
DAF 4	100 x 50 (Moulded)	2	-
DAF 5	100 x 100 (Fabricated)	2	-
DAF 6	150 x 100 (Fabricated)	2	-



OUTSIDE ANGLE

Item code	Size (mm)	Standard packs	Bulk packs
DAO 1	50 x 50 (Moulded)	2	-
DAO 2	75 x 50 (Moulded)	2	-
DAO 3	75 x 75 (Moulded)	2	-
DAO 4/A	100 x 40 (Moulded)	2	-
DAO 4	100 x 50 (Moulded)	2	-
DAO 5	100 x 100 (Fabricated)	2	-
DAO 6	150 x 100 (Fabricated)	2	-



FLAT TEE

Item code	Size (mm)	Standard packs	Bulk packs
DTF 1	50 x 50 (Moulded)	2	-
DTF 2	75 x 50 (Moulded)	2	-
DTF 3	75 x 75 (Moulded)	2	-
DTF 4/A	100 x 40 (Moulded)	2	-
DTF 4	100 x 50 (Moulded)	2	-
DTF 5	100 x 100 (Fabricated)	2	-
DTF 6	150 x 100 (Fabricated)	2	-



EDGE TEE

Item code	Size (mm)	Standard packs	Bulk packs
DTE 1	50 x 50 (Fabricated)	2	-
DTE 2	75 x 50 (Fabricated)	2	-
DTE 3	75 x 75 (Fabricated)	2	-
DTE 4/A	100 x 40 (Fabricated)	2	-
DTE 4	100 x 50 (Fabricated)	2	-
DTE 5	100 x 100 (Fabricated)	2	-
DTE 6	150 x 100 (Fabricated)	2	-



FLAT CROSSOVER UNIT

Item code	Size (mm)	Standard packs	Bulk packs
DCF 1	50 x 50 (Fabricated)	2	-
DCF 2	75 x 50 (Fabricated)	2	-
DCF 3	75 x 75 (Fabricated)	2	-
DCF 4/A	100 x 40 (Fabricated)	2	-
DCF 4	100 x 50 (Fabricated)	2	-
DCF 5	100 x 100 (Fabricated)	2	-
DCF 6	150 x 100 (Fabricated)	2	-

Options : White. Other colours are available upon request



DECODUCT

MANUFACTURED IN ACCORDANCE WITH
BRITISH AND EUROPEAN STANDARDS

Panel Trunking :

BS EN 50085

PANEL TRUNKING





Panel Trunking



PRODUCT RANGE INFORMATION

NOMINAL SIZE	25x25	38x25	38x38	38x50	50x25	50x38
PRODUCT CODE	DST 220	DST 320	DST 330	DST 350	DST 520	DST 530

DIMENSIONS (mm)

Height (H)	25	37.5	37.5	37.5	50	50
Width (W)	25	25	37.5	50	25	37.5
Standard Length	2000	2000	2000	2000	2000	2000
Slot Width (S) W/N	5	5	5	5	8	8
Wall Finger Width (F) W/N	7.5	7.5	7.5	7.5	12	12
Cabling Area (mm ²)	430	705	1,120	1,540	970	1,550

PACKING :

STANDARD PACK :	Pieces	20	16	16	12	16	12
	Metres	40	32	32	24	32	24
	Kgs (W/N)	9.0	8.2	9.7	9.5	9.9	8.5
BULK PACK:	Pieces	80	72	48	32	56	40
	Metres	160	144	96	64	112	80
	Kgs (W/N)	36.2	36.9	29.1	25.2	34.6	28.5

CABLE CAPACITIES (No. of Wires), based on 45% Filling Factor:

1.0 mm ²	29	48	76	105	66	110
1.5 mm ²	25	41	66	91	57	91
2.5 mm ²	20	33	52	72	45	72
4.0 mm ²	13	21	34	47	30	48
6.0 mm ²	10	16	26	36	23	37

Options : Grey. Other colours are available upon request



50x50	50x75	62x25	62x38	62x62	75x38	75x50	75x75
DST 550	DST 570	DST 620	DST 630	DST 660	DST 730	DST 750	DST 770
50	50	62.5	62.5	62.5	75	75	75
50	75	25	38	62.5	37.5	50	75
2000	2000	2000	2000	2000	2000	2000	2000
8	8	8/5	8/5	8/5	8	8	8
12	12	12/7.5	12/7.5	12/7.5	12	12	12
2,140	3,285	1,240	1,980	3,460	2,330	3,230	5,020
12	8	16	12	8	8	8	4
24	16	32	24	16	16	16	8
10.4	9.0	7.5/12.5	5.9/9.8	4.5/7.5	7.3	8.5	5.1
56	40	42	30	36	54	42	30
112	80	84	60	72	108	84	60
48.4	44.8	21.7/34.8	16.9/26.7	22.5/35.9	49.4	44.9	38.6
145	223	84	134	235	158	220	342
126	194	73	116	204	137	191	297
100	153	58	92	161	109	151	235
66	101	38	61	106	72	100	155
51	78	29	47	82	55	77	120

DECODUCT



**MANUFACTURED IN ACCORDANCE WITH
BRITISH & AMERICAN STANDARDS**

**Rigid Round
Conduits & Fittings : BS EN 61386 -21**

Corrugated Conduits : BS EN 61386 -22

Oval Conduits

**Conduit Switch
& Socket Boxes : BS 5733 / BS 4662**

INTERTEK CERTIFIED

RoHS COMPLIANT

CONDUIT SYSTEMS





Conduit System

DECODUCT Conduits are manufactured from super high impact uPVC compound suitable to withstand harsh environments.



SUPER HEAVY GRADE ROUND CONDUITS : 1400N - 3000N COMPRESSION FORCE

Item code	Nominal Size mm	Minimum Compression Force	Standard packs		Bulk packs
			Pcs.	Mtrs.	Pcs.
DSV2	20.0	1400 N	20	58	5000
DSV3	25.0	1400 N	20	58	3200
DSV4	32.0	2000 N	10	29	1800
DSV5	38.0	2000 N	10	29	1300
DSV6	50.0	3000 N	10	29	720



HEAVY GRADE ROUND CONDUITS - 1250N COMPRESSION FORCE

Item code	Nominal Size mm	Minimum Compression Force	Standard packs		Bulk packs
			Pcs.	Mtrs.	Pcs.
DCV 2	20.0	1250 N	20	58	5000
DCV 3	25.0	1250 N	20	58	3200
DCV 4	32.0	1250 N	10	29	1800
DCV 5	38.0	1250 N	10	29	1300
DCV 6	50.0	1250 N	10	29	720



MEDIUM GRADE ROUND CONDUITS - 750N COMPRESSION FORCE

Item code	Nominal Size mm	Minimum Compression Force	Standard packs		Bulk packs
			Pcs.	Mtrs.	Pcs.
DCH 2	20.0	750 N	20	58	5000
DCH 3	25.0	750 N	20	58	3200
DCH 4	32.0	750 N	10	29	1800
DCH 5	38.0	750 N	10	29	1300
DCH 6	50.0	750 N	10	29	720



LIGHT GRADE ROUND CONDUITS - 320N COMPRESSION FORCE

Item code	Nominal Size mm	Minimum Compression Force	Standard packs		Bulk packs
			Pcs.	Mtrs.	Pcs.
DCL 2	20.0	320 N	20	58	5000
DCL 3	25.0	320 N	20	58	3200
DCL 4	32.0	320 N	10	29	1800
DCL 5	38.0	320 N	10	29	1300
DCL 6	50.0	320 N	10	29	720

- Tolerance as per IEC 60423 applies on dimensions.

Conduit System



OVAL CONDUIT

Item code	Size (mm)	Standard packs		Bulk packs
		Pcs	Mtrs	
DOV 1	16 x 0.8	50	150	-
DOV 2	22 x 0.8	50	150	-
DOV 3	28 x 1.0	50	150	-



PLIABLE CONDUIT-CORRUGATED

Item code	Nominal Size (O.D.) (mm)	Minimum Inside Diameter (mm)	Standard packs Mtrs/Roll	Bulk packs
HEAVY GAUGE				
DPH 2	20	14.6	50	8 Rolls
DPH 3	25	18.7	50	6 Rolls
DPH 4	32	24.6	25	6 Rolls
DPH 5	40	31.9	25	6 Rolls
DPH 6	50	40.9	20	6 Rolls
LIGHT GAUGE				
DPL 2	20	14.7	50	8 Rolls
DPL 3	25	18.8	50	6 Rolls
DPL 4	32	24.7	25	6 Rolls
DPL 5	40	32.1	25	6 Rolls
DPL 6	50	41.1	20	6 Rolls

• Available in black, white or grey



RECTANGULAR CHANNELS

Item code	Size (mm)	Standard packs		Bulk packs
		Pcs	Mtrs	
DQC 1	13 x 8	50	100	-
DQC 2	25 x 8	50	100	-
DQC 3	38 x 9.5	50	100	-

• Available in black, white or grey

• Standard Length 2 metres

Options

- Decoduct rigid conduit is available in black or white. Please state colour preference
- Decoduct rigid conduit is supplied in standard lengths of 2.9 metres. Alternative lengths can be supplied to order
- Rigid conduits can be offered with belled ends for socket joining. Please specify when this option is required.

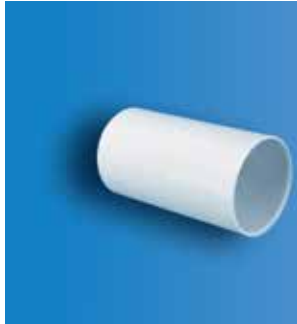


DECODUCT®

CABLE MANAGEMENT SYSTEMS

Round Conduit Fittings

DECODUCT Conduit fittings are manufactured from super high impact uPVC compound suitable to withstand harsh environments



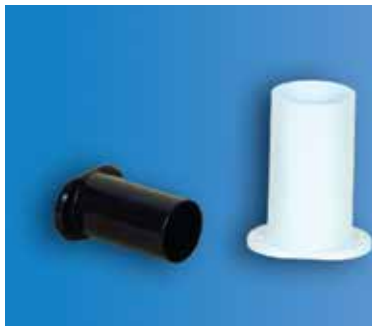
STRAIGHT COUPLERS

Item code	Size (mm)	Standard packs	Bulk packs
DNC 2	20	100	2600
DNC 3	25	50	1300
DNC 4	32	50	800
DNC 5	38	25	400
DNC 6	50	20	240



EXPANSION COUPLERS

Item code	Size (mm)	Standard packs	Bulk packs
DEC 2	20	50	800
DEC 3	25	25	625
DEC 4	32	10	260
DEC 5	38	10	250
DEC 6	50	10	120



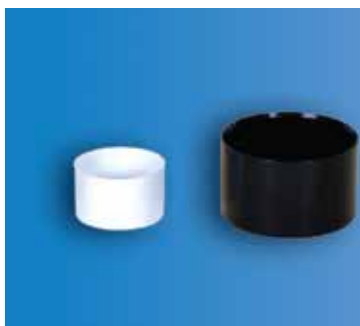
FLANGED COUPLERS

Item code	Size (mm)	Standard packs	Bulk packs
DFC 2	20	100	2600
DFC 3	25	50	1300
DFC 4	32	30	480
DFC 5	38	20	320
DFC 6	50	15	180



TELESCOPIC DOUBLE TUBE EXPANSION COUPLING

Item code	Size (mm)	Standard packs	Bulk packs
DTC 2	20	20	520
DTC 3	25	12	312
DTC 4	32	12	192
DTC 5	38	10	120
DTC 6	50	5	70



END CAPS

Item code	Size (mm)	Standard packs	Bulk packs
DCEC 2	20	100	7000
DCEC 3	25	100	5000
DCEC 4	32	50	2500
DCEC 5	38	25	1250
DCEC 6	50	20	520

Options : Available in black, white or grey

Round Conduit Fittings



NORMAL BENDS-SLIP TYPE

Item code	Size (mm)	Standard packs	Bulk packs
DLB 2	20	20	320
DLB 3	25	10	200
DLB 4	32	5	120
DLB 5	38	2	60
DLB 6	50	2	28



NORMAL BENDS-HEAVY GAUGE

Item code	Size (mm)	Standard packs	Bulk packs
DHB 2	20	20	320
DHB 3	25	10	200
DHB 4	32	5	120
DHB 5	38	2	60
DHB 6	50	2	30



INSPECTION ELBOWS

Item code	Size (mm)	Standard packs	Bulk packs
DIE 2	20	25	650
DIE 3	25	25	400



INSPECTION BENDS

Item code	Size (mm)	Standard packs	Bulk packs
DIB 2	20	25	400
DIB 3	25	20	320



INSPECTION TEES

Item code	Size (mm)	Standard packs	Bulk packs
DIT 2	20	20	520
DIT 3	25	20	320

Options : Available in black, white or grey



Round Conduit Fittings



STRAP SADDLES

Item code	Size (mm)	Standard packs	Bulk packs
DSS 2	20	100	5000
DSS 3	25	100	5000
DSS 4	32	100	2600
DSS 5	38	50	2500
DSS 6	50	50	1300



SPACER BAR SADDLES

Item code	Size (mm)	Standard packs	Bulk packs
DSB 2	20	100	2600
DSB 3	25	50	2500
DSB 4	32	50	1300
DSB 5	38	25	1250
DSB 6	50	25	650



ROUND SPRING CLIPS

Item code	Size (mm)	Standard packs	Bulk packs
DRC2	20	200	5200
DRC3	25	100	5000



FEMALE ADAPTORS

Item code	Size (mm)	Standard packs	Bulk packs
DFA2	20	100	2600
DFA3	25	50	1300
DFA4	32	25	650
DFA5	38	20	520
DFA6	50	20	320



MALE ADAPTORS

Item code	Size (mm)	Standard packs	Bulk packs
DMA2	20	100	2600
DMA3	25	50	1300

Options : Available in black, white or grey

Round Conduit Fittings

MALE THREADED BUSH

Item code	Size (mm)	Standard packs	Bulk packs
DMB2	20	200	10,000
DMB3	25	100	5000
DMB4	32	100	2600
DMB5	38	50	2500
DMB6	50	25	1500


FEMALE THREADED LOCKRINGS

Item code	Size (mm)	Standard packs	Bulk packs
DFB 2	20	200	10,000
DFB 3	25	200	10,000


REDUCERS

Item code	Size (mm)	Standard packs	Bulk packs
DRD 2	25/20	100	2600


PLIABLE CONDUIT ADAPTORS


Item code	Size (mm)	Standard packs	Bulk packs
DPA2	20	50	2500
DPA3	25	100	1200

Options : Available in black, white or grey




Round Conduit Circular Junction Boxes

Fixing centres 50.8mm. Earth terminals facility. M4 brass inserts. Load suspension 3kgs at 60°C. Knock outs to accept steel clips for the support of heavy loads.




NO SPOUT BOX

Item code	Size (mm)	Depth	Diameter	Standard packs	Bulk packs
DNS	Plain	30mm	66mm	25	400




LOOP IN BOXES

Item code	Size (mm)	Depth	Diameter	Standard packs	Bulk packs
DLI 2	20 K.O.(4)	30mm	66mm	25	400
DLI 3	25 K.O.(2)	30mm	66mm	25	400



TERMINAL - ONE WAY

Item code	Size (mm)	Depth	Diameter	Standard packs	Bulk packs
DJO 2	20	30mm	66mm	25	400
DJO 3	25	30mm	66mm	25	400



THROUGH - TWO WAY

Item code	Size (mm)	Depth	Diameter	Standard packs	Bulk packs
DJT 2	20	30mm	66mm	25	400
DJT 3	25	30mm	66mm	25	300

Options : Available in black, white or grey

Depth of the Box can be increased by 15 mm by using extension ring DER2 and can be increased by 20 mm by using extension ring DER3

Round Conduit Circular Junction Boxes



ANGLE - TWO WAY

Item code	Size (mm)	Depth	Diameter	Standard packs	Bulk packs
DJA 2	20	30mm	66mm	20	320
DJA 3	25	30mm	66mm	20	320



TEE - THREE WAY

Item code	Size (mm)	Depth	Diameter	Standard packs	Bulk packs
DJE 2	20	30mm	66mm	20	320
DJE 3	25	30mm	66mm	20	240



INTERSECTION - FOUR WAY

Item code	Size (mm)	Depth	Diameter	Standard packs	Bulk packs
DJF 2	20	30mm	66mm	20	240
DJF 3	25	30mm	66mm	20	240



U - TWO WAY

Item code	Size (mm)	Depth	Diameter	Standard packs	Bulk packs
DJU 2	20	30mm	66mm	20	320
DJU 3	25	30mm	66mm	20	320

Options : Available in black, white or grey

Depth of the Box can be increased by 15 mm by using extension ring DER2 and can be increased by 20 mm by using extension ring DER3



DECODUCT[®]

CABLE MANAGEMENT SYSTEMS

Round Conduit Circular Junction Boxes

Fixing centres 50.8mm. Earth terminals facility. M4 brass inserts. Load suspension 3kgs at a of 60°c. Knock outs to accept steel clips for the support of heavy loads.



Y - THREE WAY

Item code	Size (mm)	Depth	Diameter	Standard packs	Bulk packs
DJY 2	20	30mm	66mm	20	320
DJY 3	25	30mm	66mm	20	240



H - FOUR WAY

Item code	Size (mm)	Depth	Diameter	Standard packs	Bulk packs
DJH 2	20	30mm	66mm	20	240
DJH 3	25	30mm	66mm	20	240



CIRCULAR EXTENSION RINGS

Item code	Size (mm) height	Standard packs	Bulk packs
DER 2	15	50	800
DER 3	20	50	800



CIRCULAR LIDS

Item code	Size (mm)	Standard packs	Bulk packs
DLC 1	66 dia	100	2600

Options : Available in black, white or grey

Depth of the Box can be increased by 15 mm by using extension ring DER2 and can be increased by 20 mm by using extension ring DER3

Round Conduit Fixing Accessories



CIRCULAR JUNCTION BOXES FITTED WITH RUBBER GASKET, LID & SCREWS

Circular junction boxes can be supplied assembled with rubber gasket, lid and screws. Eg. item codes for 20mm 2 way through circular junction box DJT 2 should be suffixed with/RG as DJT 2/RG



RUBBER GASKET

Item code	Size (mm)	Standard packs	Bulk packs
DRG-B	66 dia	100	2600



BENDING SPRINGS

Heavy Gauge Item code	Conduit Size (mm)	Light Gauge Item code	Bulk packs
DBH 2	20	DBL 2	-
DBH 3	25	DBL 3	-

Heavy gauge springs are suitable for heavy & medium gauge round conduits while light gauge springs are suitable for light gauge round conduits



PVC CEMENT

Item code	Standard packs	Bulk packs
DSG 2	24	-

Solvent Cement 250ml cans with applicator. Suitable for use with DECODUCT uPVC conduit, trunking & fittings



DECODUCT®

CABLE MANAGEMENT SYSTEMS

Round Conduit Circular Junction Boxes with Back Outlet

Fixing centres 50.8mm. Earth terminals facility. M4 brass inserts. Load suspension 3kgs at 60°C. Knock outs to accept steel clips for the support of heavy loads.



TERMINAL ONE WAY & BACK OUTLET

Item code	Size (mm)	Depth	Diameter	Standard packs	Bulk packs
DJO 2/BO	20	30mm	66mm	20	320
DJO 3/BO	25	30mm	66mm	20	240



THROUGH TWO WAY & BACK OUTLET

Item code	Size (mm)	Depth	Diameter	Standard packs	Bulk packs
DJT 2/BO	20	30mm	66mm	20	240
DJT 3/BO	25	30mm	66mm	20	240



ANGLE TWO WAY & BACK OUTLET

Item code	Size (mm)	Depth	Diameter	Standard packs	Bulk packs
DJA 2/BO	20	30mm	66mm	20	240
DJA 3/BO	25	30mm	66mm	20	240



TEE THREE WAY & BACK OUTLET

Item code	Size (mm)	Depth	Diameter	Standard packs	Bulk packs
DJE 2/BO	20	30mm	66mm	20	240
DJE 3/BO	25	30mm	66mm	10	160

Options : Available in black, white or grey

Depth of the Box can be increased by 15 mm by using extension ring DER2 and can be increased by 20 mm by using extension ring DER3

Round Conduit Circular Junction Boxes with Back Outlet



INTERSECTION FOUR WAY & BACK OUTLET

Item code	Size (mm)	Depth	Diameter	Standard packs	Bulk packs
DJF 2/BO	20	30mm	66mm	10	160
DJF 3/BO	25	30mm	66mm	10	160



U-TWO WAY & BACK OUTLET

Item code	Size (mm)	Depth	Diameter	Standard packs	Bulk packs
DJU 2/BO	20	30mm	66mm	20	240
DJU 3/BO	25	30mm	66mm	20	240



Y-THREE WAY & BACK OUTLET

Item code	Size (mm)	Depth	Diameter	Standard packs	Bulk packs
DJY 2/BO	20	30mm	66mm	20	240
DJY 3/BO	25	30mm	66mm	10	160



H-FOUR WAY & BACK OUTLET

Item code	Size (mm)	Depth	Diameter	Standard packs	Bulk packs
DJH 2/BO	20	30mm	66mm	10	160
DJH 3/BO	25	30mm	66mm	10	160

Options : Available in black, white or grey

Depth of the Box can be increased by 15 mm by using extension ring DER2 and can be increased by 20 mm by using extension ring DER3



Round Conduit Accessory Mounting Boxes

Fitted with M3.5 brass fixing threads and earth terminal facility. Fixing centres 60.3mm for single gang and 120.6mm for twin gang boxes



SINGLE GANG SURFACE MOUNTING ACCESSORY BOX

Item code	DSO2	DSO2/K	Standard packs	Bulk packs
Type	Plain	with K.O	20 Pcs	240
Depth	32mm	32mm		
Size	87 x 87mm	87 x 87mm		
Std Packs	20	20		



TWIN GANG SURFACE MOUNTING ACCESSORY BOX

Item code	DST2	DST2/K	Standard packs	Bulk packs
Type	Plain	with K.O	10 Pcs	120
Depth	32mm	32mm		
Size	87 x 147mm	87 x 147mm		
Std Packs	10	10		



SINGLE GANG FLUSH MOUNTING ACCESSORY BOX

Item code	DFO2/AL	Standard packs	Bulk packs
Type	with K.O. and one adjustable lug	20 Pcs	240
Depth	35mm		
Size	74 x 74mm		
Entries	2 x 20 mm on each of the four sides		
Std Packs	20		



TWIN GANG FLUSH MOUNTING ACCESSORY BOX

Item code	DFT2/AL	Standard packs	Bulk packs
Type	with K.O. and one adjustable lug	10 Pcs	120
Depth	35mm		
Size	74 x 134.3mm		
Entries	4 x 20 mm on long sides 2 x 20 mm on short sides		
Std Packs	10		

Options : Available in black, white or grey

Round Conduit Accessory Mounting Boxes



HIGH IMPACT SINGLE GANG INDUSTRIAL SURFACE MOUNTING ACCESSORY BOX

Item code	DSI1	Standard packs	Bulk packs
Type	with K.O	10 Pcs	-
Depth	41mm (Inside)		
Size	87 x 87mm		
Entries	5 x 20mm along with plugs		
Std Packs	10		
Material	Polycarbonate		

• Available in Grey but other colours can be produced upon request



SINGLE GANG FLUSH MOUNTING DRY LINING ACCESSORY BOX

Item code	DLO3	Standard packs	Bulk packs
Type	2 x 25mm C.O.	10 Pcs	240
Depth	34mm		
Size	74 x 74mm		
Std Packs	20		



TWIN GANG FLUSH MOUNTING DRY LINING ACCESSORY BOX

Item code	DLT3	Standard packs	Bulk packs
Type	2 x 25mm C.O.	10 Pcs	120
Depth	34mm		
Size	74 x 134mm		
Std Packs	10		



SQUARE LIDS/RECTANGULAR LIDS (Overlapping)

Item code	Size (mm)	Standard packs	Bulk packs
DSL 1	85 x 85mm	100	4000
DSL 2	85 x 146mm	50	1300

Options : Available in black, white



DECODUCT®

CABLE MANAGEMENT SYSTEMS

Adaptable Boxes



ADAPTABLE BOX

Item code	Size (mm)	Nominal Depth (mm)		Standard Packs (pcs)
	Nominal	Base	Lid	
DAB 2 B	75 x 75 x 56	50	6	80
DAB 4 B	100 x 100 x 75	60	15	30
DAB 5 B	150 x 110 x 75	60	15	20
DAB 6 B	150 x 150 x 75	60	15	14
DAB 7 B	190 x 140 x 75	60	15	10
DAB 8 B	225 x 225 x 75	60	15	6
DAB 9 B	240 x 190 x 105	90	15	6

Ingress Protection Rating: IP 56 (with rubber gasket)

Colour : Black



ADAPTABLE BOX

Item code	Size (mm)	Nominal Depth (mm)		Standard Packs (pcs)
	Nominal	Base	Lid	
DAB 2 G	75 x 75 x 56	50	6	80
DAB 4 G	100 x 100 x 75	60	15	30
DAB 5 G	150 x 110 x 75	60	15	20
DAB 6 G	150 x 150 x 75	60	15	14
DAB 7 G	190 x 140 x 75	60	15	10
DAB 8 G	225 x 225 x 75	60	15	6
DAB 9 G	240 x 190 x 105	90	15	6

Ingress Protection Rating: IP 56 (with rubber gasket)

Colour : Grey



ADAPTABLE BOX

Item code	Size (mm)	Nominal Depth (mm)		Standard Packs (pcs)
	Nominal	Base	Lid	
DAB 2 W	75 x 75 x 56	50	6	80
DAB 4 W	100 x 100 x 75	60	15	30
DAB 5 W	150 x 110 x 75	60	15	20
DAB 6 W	150 x 150 x 75	60	15	14
DAB 7 W	190 x 140 x 75	60	15	10
DAB 8 W	225 x 225 x 75	60	15	6
DAB 9 W	240 x 190 x 105	90	15	6

Ingress Protection Rating: IP 56 (with rubber gasket)

Colour : White



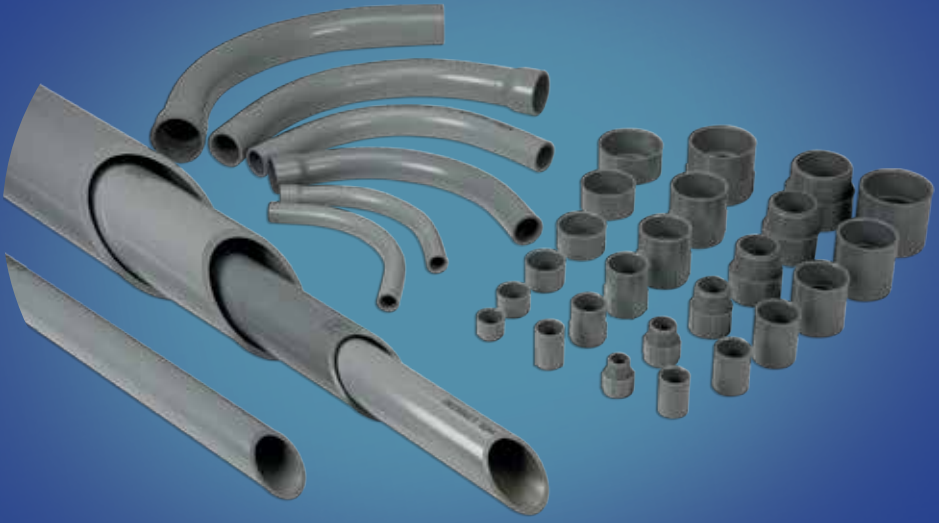
DECONDUCT

**SCHEDULE - 40 SCHEDULE - 80
uPVC ELECTRICAL CONDUITS & FITTINGS**

**MANUFACTURED IN ACCORDANCE
WITH
NEMA - TC2, TC3, TC6 & TC8 STANDARDS**

**ALL THE SCHEDULE - 40 AND
SCHEDULE - 80 RANGE OF CONDUITS
AND FITTINGS WILL BE SUPPLIED
FROM OUR FACTORY IN
KINGDOM OF SAUDI ARABIA.**

SCHEDULE - 40 SCHEDULE - 80





NEMA Schedule 40 Conduit

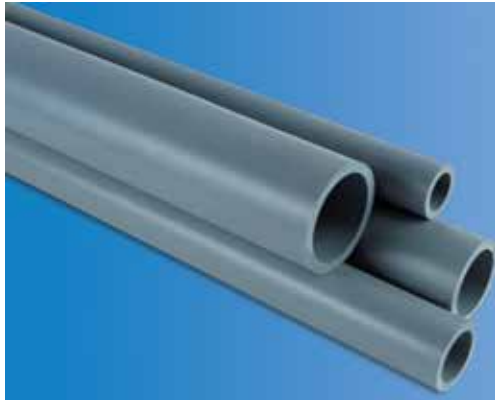


TABLE 1: IN COMPLIANCE WITH NEMA TC 2 SPECIFICATION

Item Code	Trade / Metric Inch / mm	Maximum Outer Diameter	Dimension (mm) Schedule - 40 Minimum Wall Thickness	Dimension (mm) Schedule - 80 Minimum Wall Thickness	Standard Packs	
					Pieces	Meters
DCS4 - 1	½" / 16 mm	21.54	2.77	3.73	20	60
DCS4 - 2	¾" / 21 mm	26.92	2.87	3.91	10	30
DCS4 - 3	1" / 27 mm	33.66	3.38	4.55	10	30
DCS4 - 4	1¼" / 35 mm	42.47	3.56	4.35	5	15
DCS4 - 5	1½" / 41 mm	48.56	3.68	5.08	5	15
DCS4 - 6	2" / 53 mm	60.63	3.91	5.54	1	3
DCS4 - 7	3" / 78 mm	89.28	5.49	7.62	1	3
DCS4 - 8	4" / 103 mm	115.57	6.02	8.56	1	3
DCS4 - 9	6" / 155 mm	169.54	7.11	10.97	1	3

* Standard Length of 3 meters in grey colour. Other colours and lengths can be produced upon request.

TABLE 2A: IN COMPLIANCE WITH NEMA TC 6 AND ASTM F 512 SPECIFICATION (TYPE : EB 20)

Item Code For EB 20	Nominal Size Inch	Average Outside Diameter (mm)	Minimum Wall Thickness (mm)	Standard Packs	
				Pieces	Meters
DCS8 - 16E	2	60.32	1.52	1	6
DCS8 - 26E	3	88.90	1.55	1	6
DCS8 - 36E	4	114.30	2.08	1	6
DCS8 - 46E	6	168.28	3.18	1	6

TABLE 2B: IN COMPLIANCE WITH NEMA TC 6 AND ASTM F 512 SPECIFICATION (TYPE : DB 60)

Item Code For DB 60	Nominal Size Inch	Average Outside Diameter (mm)	Minimum Wall Thickness (mm)	Standard Packs	
				Pieces	Meters
DCS8 - 16D	2	60.32	1.52	1	6
DCS8 - 26D	3	88.90	2.34	1	6
DCS8 - 36D	4	114.30	3.07	1	6
DCS8 - 46D	6	168.28	4.62	1	6



NEMA Schedule 40 Conduit

TABLE 3A: IN COMPLIANCE WITH NEMA TC 8 AND ASTM F 512 SPECIFICATION (TYPE : EB 35)

Item Code For EB 35	Nominal Size Inch	Average Outside Diameter (mm)	Minimum Wall Thickness (mm)	Standard Packs	
				Pieces	Meters
DCS8 - 38E	2	60.32	1.52	1	6
DCS8 - 48E	3	88.90	1.93	1	6
DCS8 - 58E	4	114.30	2.54	1	6
DCS8 - 68E	6	168.28	3.86	1	6

NEMA Schedule 80 Conduit

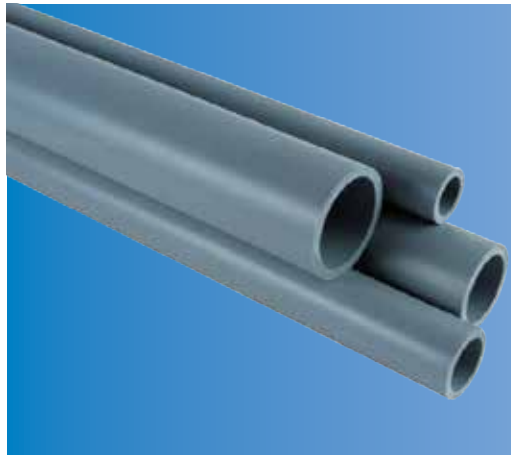


TABLE 3B: IN COMPLIANCE WITH NEMA TC 8 AND ASTM F 512 SPECIFICATION (TYPE : DB 120)

Item Code For DB 120	Nominal Size Inch	Average Outside Diameter (mm)	Minimum Wall Thickness (mm)	Standard Packs	
				Pieces	Meters
DCS8 - 18D	1	33.40	1.52	10	60
DCS8 - 28D	1½	48.26	1.52	5	30
DCS8 - 38D	2	60.32	1.96	1	6
DCS8 - 48D	3	88.90	3.00	1	6
DCS8 - 58D	4	114.30	3.91	1	6
DCS8 - 68D	6	168.28	5.77	1	6

Standard Lengths of 3 & 6 Metres in Grey Colour. Other Colours and Lengths Can Be Produced Upon Request.

Type EB : Designed for Encased Burial in Concrete.

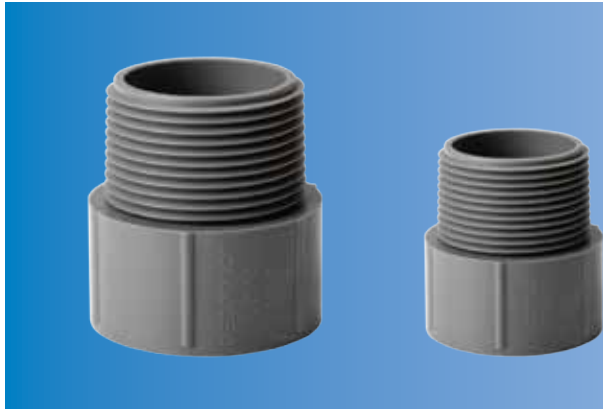
Type DB : Designed for Direct Burial without Encasement in Concrete.

Note : Figures 20, 60 in Tables 2A & 2B and 35, 120 in Tables 3A & 3B Are the Minimum for Pipe Stiffness.



NEMA TC3 uPVC Fittings

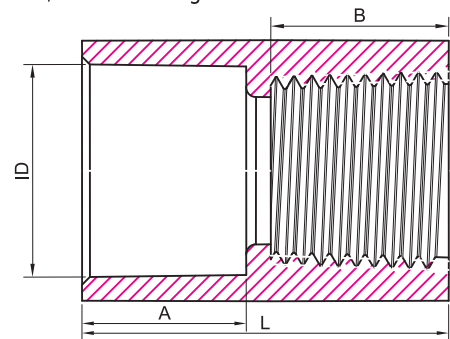
MALE ADAPTORS



Item Codes	Product Size Inches	Pack Qty.
NS40MA 1/2" G	1/2"	120
NS40MA 3/4" G	3/4"	140
NS40MA 1" G	1"	80
NS40MA 1 1/4" G	1 1/4"	48
NS40MA 1 1/2" G	1 1/2"	30
NS40MA 2" G	2"	16

Trade Size	Metric Designator	A mm	B mm	Inside Diameter (ID) mm	Length (L) mm
1/2	16	16.70	14.30	21.64	33.50
3/4	21	18.40	16.00	27.03	36.90
1	27	22.35	21.00	33.78	45.80
1 1/4	35	23.95	25.61	42.60	52.06
1 1/2	41	27.10	26.04	48.72	55.64
2	53	28.70	26.87	60.78	58.07

A Male Adaptor is intended for joining conduits to boxes, threaded fittings or similar threaded devices.



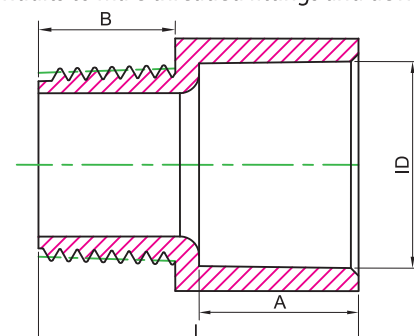
FEMALE ADAPTORS



Item Codes	Product Size Inches	Pack Qty.
NS40FA 1/2" G	1/2"	150
NS40FA 3/4" G	3/4"	100
NS40FA 1" G	1"	70
NS40FA 1 1/4" G	1 1/4"	48
NS40FA 1 1/2" G	1 1/2"	25
NS40FA 2" G	2"	15

Trade Size	Metric Designator	A mm	B mm	Inside Diameter (ID) mm	Length (L) mm
1/2	16	16.7	16.6	21.66	336.8
3/4	21	18.4	17.6	27.05	39.00
1	27	22.3	22.2	33.80	48.00
1 1/4	35	24.3	26.7	42.60	53.40
1 1/2	41	27.4	26.5	48.70	56.10
2	53	29.0	25.5	60.80	57.00

A Female Adaptor is intended for joining conduits to male threaded fittings and devices.





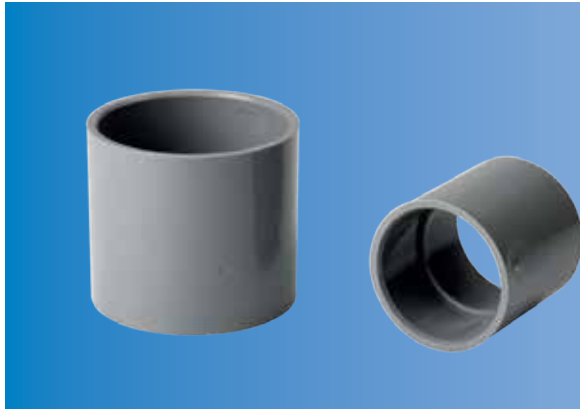
DECODUCT[®]

CABLE MANAGEMENT SYSTEMS

NEMA TC3 uPVC Fittings

NEMA SCHEDULE 40 & 80

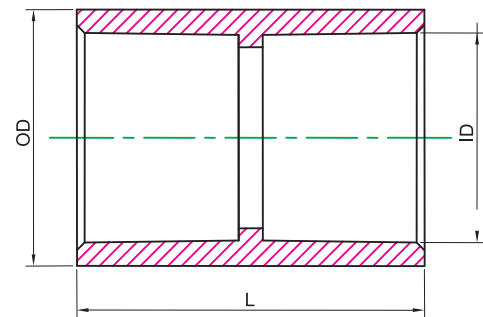
COUPLINGS



Item Codes	Product Size Inches	Pack Qty.
NS40SC 1/2" G	1/2"	150
NS40SC 3/4" G	3/4"	100
NS40SC 1" G	1"	70
NS40SC 1 1/4" G	1 1/4"	48
NS40SC 1 1/2" G	1 1/2"	25
NS40SC 2" G	2"	50

Trade Size	Metric Designator	Inside Diameter (OD) mm	Inside Diameter (ID) mm	Length (L) mm
1/2	16	26.46	21.64	35.9
3/4	21	31.85	27.03	39.3
1	27	38.86	33.78	47.2
1 1/4	35	48.70	42.60	50.4
1 1/2	41	54.82	48.72	56.7
2	53	67.38	60.78	59.9

A coupling is intended to join lengths of conduit pipes.



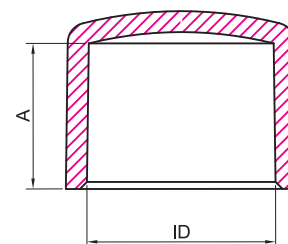
END CAPS



Item Codes	Product Size Inches	Pack Qty.
NS40EC 1/2" G	1/2"	150
NS40EC 3/4" G	3/4"	100
NS40EC 1" G	1"	80
NS40EC 1 1/4" G	1 1/4"	54
NS40EC 1 1/2" G	1 1/2"	50
NS40SC 2" G	2"	39

Trade Size	Metric Designator	Diameter (ID) mm	A mm
1/2	16	21.64	16.70
3/4	21	27.03	18.40
1	27	33.78	22.35
1 1/4	35	42.60	23.95
1 1/2	41	48.72	27.10
2	53	60.78	28.70

An End Cap is intended for closing the ends of unused lengths of conduits.





NEMA TC3 uPVC Fittings

END BELLS



Item Codes	Product Size Inches	Pack Qty.
NS40EB 1" G	1"	20
NS40EB 1½" G	1½"	25

NORMAL BENDS



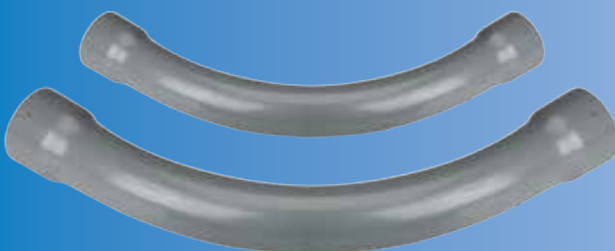
Item Codes	Product Size Inches	Pack Qty.
NS40NB ½" G	½"	20
NS40NB ¾" G	¾"	10
NS40NB 1" G	1"	5
NS40NB 1¼" G	1¼"	2
NS40NB 1½" G	1½"	2
NS40NB 2" G	2"	2

SOCKETED BENDS - ONE END



Item Codes	Product Size Inches	Pack Qty.
NS40BS ½" G	½"	20
NS40BS ¾" G	¾"	10
NS40BS 1" G	1"	5
NS40BS 1¼" G	1¼"	2
NS40BS 1½" G	1½"	2
NS40BS 2" G	2"	2

SOCKETED BENDS - TWO END



Item Codes	Product Size Inches	Pack Qty.
NS40BDS ½" G	½"	20
NS40BDS ¾" G	¾"	10
NS40BDS 1" G	1"	5
NS40BDS 1¼" G	1¼"	2
NS40BDS 1½" G	1½"	2
NS40BDS 2" G	2"	2

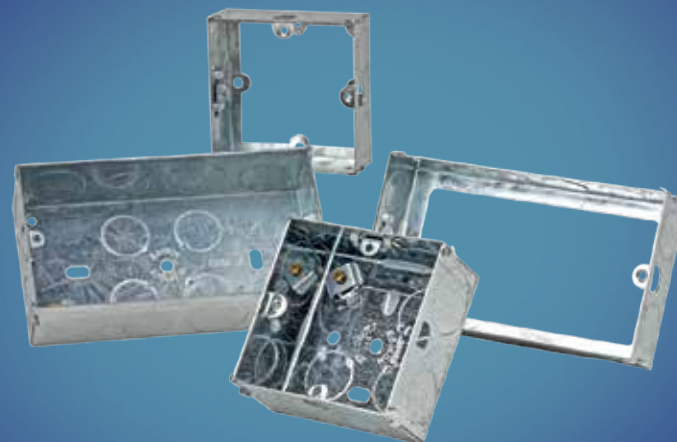


DECODUCT

METAL MOUNTING BOXES

**THESE BOXES ARE MANUFACTURED IN
COMPLIANCE WITH BS4662: 2006 + A1: 2009.**

METAL MOUNTING BOXES





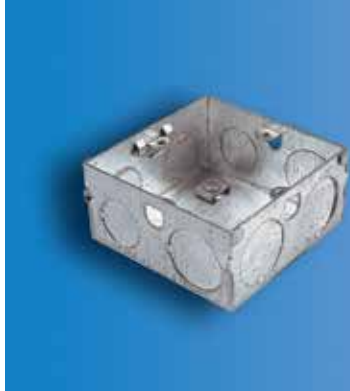
DECODUCT®

CABLE MANAGEMENT SYSTEMS

Metal Mounting Boxes

DECODUCT flush mounting metal (GI) boxes are manufactured from the highest quality galvanised steel and can be fitted with brass or steel terminals. Available with adjustable lug. These boxes are manufactured in compliance with BS4662: 2006 + A1: 2009.

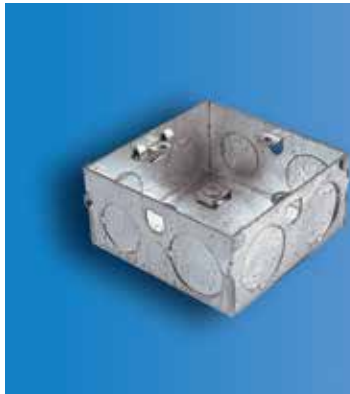
METAL MOUNTING BOXES



SINGLE GANG BOX

Item code	Description
EDF 161	With steel washer terminal
EDF 162	With brass washer terminal
EDF 163	Without terminal
EDF 164	With brass pillar terminal

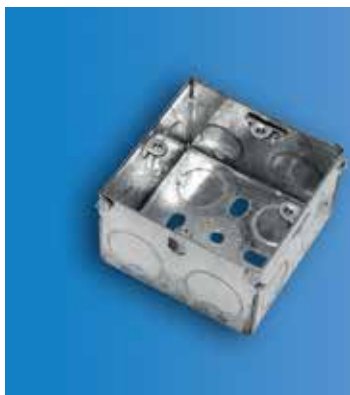
Sheet Thickness: 0.9 mm
 Dimensions : 72 x 72 x 35 mm
 One adjustable and three fixed lugs with fixing centres: 60.3 mm
 Conduit entries: 7 x 20 mm and 4 x 25 mm knockouts



SINGLE GANG BOX

Item code	Description
EDF 165	With steel washer terminal
EDF 166	With brass washer terminal
EDF 167	Without terminal
EDF 168	With brass pillar terminal

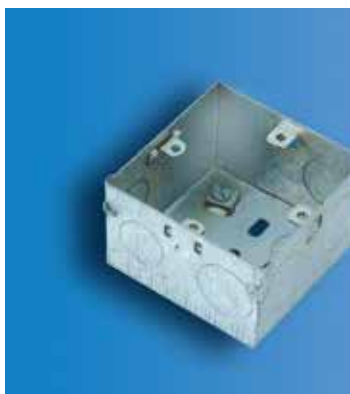
Sheet Thickness: 1.1 mm
 Dimensions : 72 x 72 x 35 mm
 Two adjustable and two fixed lugs with fixing centres: 60.3 mm
 Conduit entries: 7 x 20 mm and 4 x 25mm knockouts



SINGLE GANG BOX

Item code	Description
EDF 461	With steel washer terminal
EDF 462	With brass washer terminal
EDF 463	Without terminal
EDF 464	With brass pillar terminal

Sheet Thickness: 1.1 mm 47 mm deep
 Dimensions: 72 x 72 x 47 mm
 Two fixed and two adjustable lugs with fixing centres: 60.3 mm
 Conduit entries: 7 x 20 mm and 4 x 25 mm knockouts



SINGLE GANG BOX

Item code	Description
EDF 471	With steel washer terminal
EDF 472	With brass washer terminal
EDF 473	Without terminal
EDF 474	With brass pillar terminal

Sheet Thickness: 0.9 mm 47 mm deep
 Dimensions : 72 x 72 x 47 mm
 Two fixed and two adjustable lugs with fixing centres: 60.3 mm
 Conduit entries: 7 x 20 mm and 4 x 25 mm knockouts

Metal Mounting Boxes



SINGLE GANG BOX

Item code	Description
EDF 481	With steel washer terminal
EDF 482	With brass washer terminal
EDF 483	Without terminal
EDF 484	With brass pillar terminal

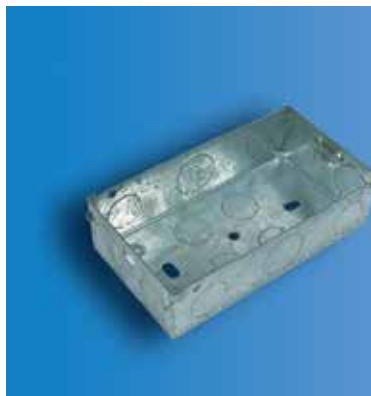
Sheet Thickness: 1.1 mm 47 mm deep
 Dimensions : 72 x 72 x 47 mm
 Three fixed and one adjustable lug with fixing centres: 60.3 mm
 Conduit entries: 7 x 20 mm and 4 x 25 mm knockouts



TWIN GANG BOX

Item code	Description
EDF 485	With steel washer terminal
EDF 486	With brass washer terminal
EDF 487	Without terminal
EDF 488	With brass pillar terminal

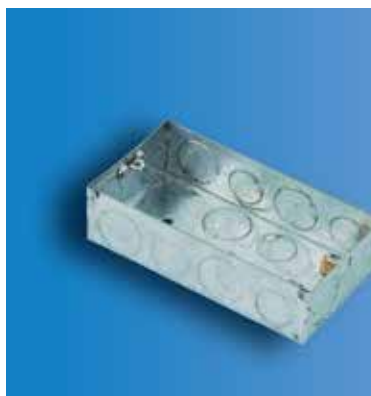
Sheet Thickness: 1.1 mm 47 mm deep
 Dimensions : 132 x 72 x 47 mm
 One adjustable and one fixed lug with fixing centres: 120.6 mm
 Conduit entries: 8 x 20mm and 8 x 25mm knockouts



TWIN GANG BOX

Item code	Description
EDF 251	With steel washer terminal
EDF 252	With brass washer terminal
EDF 253	Without terminal
EDF 242	With brass pillar terminal

Sheet Thickness: 0.9 mm
 Dimensions : 132 x 72 x 35 mm
 One fixed and one adjustable lug with fixing centres: 120.6 mm
 Conduit entries: 10 x 20 mm and 4 x 25 mm knockouts



TWIN GANG BOX

Item code	Description
EDF 285	With steel washer terminal
EDF 286	With brass washer terminal
EDF 287	Without terminal
EDF 288	With brass pillar terminal

Sheet Thickness: 1.1 mm
 Dimensions : 132 x 72 x 35 mm
 One adjustable and one fixed lug with fixing centres: 120.6 mm
 Conduit entries: 8 x 20mm and 8 x 25mm knockouts



Metal Mounting Boxes

DECODUCT flush mounting metal (GI) boxes are manufactured from the highest quality galvanised steel and can be fitted with brass or steel terminals. Available with adjustable lug. These boxes are manufactured in compliance with BS4662: 2006 + A1: 2009.



TWIN GANG BOX

Item code	Description
EDF 475	With steel washer terminal
EDF 476	With brass washer terminal
EDF 477	Without terminal
EDF 478	With brass pillar terminal

Sheet Thickness: 0.9 mm 47 mm deep
 Dimensions : 132 x 72 x 47 mm
 One adjustable and one fixed lug with fixing centres: 120.6 mm
 Conduit entries: 8 x 20mm and 8 x 25mm knockouts



DUAL BOX

Item code	Description
EDF 258	With steel washer terminal
EDF 259	With brass washer terminal
EDF 260	Without terminal
EDF 243	With brass pillar terminal

Sheet Thickness: 0.9 mm Depth : 35mm
 Eight lugs-all fixed
 Conduit entries per one gang box : 7 x 20 mm and 4 x 25 mm knockouts



SINGLE GANG EXTENSION

Item code	Description
XTN 163	Single Gang 35mm deep 0.9 mm thick Extension
XTN 167	Single Gang 35mm deep 1.1 mm thick Extension
XTN 173	Single Gang 25mm deep 0.9 mm thick Extension
XTN 183	Single Gang 25mm deep 1.1 mm thick Extension

Dimensions : 72 x 72 mm
 Fixing centres : 60.3 mm



TWIN GANG EXTENSION

Item code	Description
XTN 253	Twin Gang 35mm deep 0.9 mm thick Extension
XTN 287	Twin Gang 35mm deep 1.1 mm thick Extension
XTN 273	Twin Gang 25mm deep 0.9 mm thick Extension
XTN 283	Twin Gang 25mm deep 1.1 mm thick Extension

Dimensions : 132 x 72 mm
 Fixing centres : 120.6 mm



DECOBUCT

**TECHNICAL
SPECIFICATIONS**



CLASSIFICATION OF DADO CAT - 5 & CAT - 6 ACCORDING TO CLAUSE 6 OF SPECIFICATION STANDARD

- Material.....: Non-metallic
- Resistance to Impact.....: 5J
- Temperature classification, min. storage & transport.....: -5 °C
- Temperature classification, min. installation & application.....: -5 °C
- Temperature classification, max. application.....: + 60 °C
- Resistance to Flame propagation.....: Non-flame propagating
- Electrical Insulating characteristics.....: With electrical insulating characteristic
- System access cover retention.....: Access cover can only be opened with a tool.

INSTALLATION GUIDELINES FOR CAT 5 & CAT 6 DADO TRUNKING/ACCESSORIES

- Base of perimeter systems are provided with oval slots at fixed distance along its length.
- These are oversized for facilitating easy drilling into the intended surface of installation.
- Once drilled, size of hole permits aligning and positioning of base to wall plug and subsequent securing with flat head screw of appropriate size.
- Commence installation from the cable entry position from the rear wall into the cut opened portion of base and continue extending the lengths of trunking as required.
- Reasonable gap should be permitted for inserting the coupler fitting with the adjoining lengths for completing the run.
- System allows for vertical branching of DADO trunking with compatible accessories.
- While fixing internal/external corners, ensure to position properly and to fix adjoining approaching DADO lengths by utmost aligning.
- Terminate the trunking base 15 to 20 mm short of intended finish point for pushing the end cap into installed lids and base.
- Fixing screw must be tightened in such a way that it should permit room for any movement due to thermal contraction/expansion.
- Compatible accessories are used to connect individual length of CAT 5 and CAT 6 as per the site requirements of installation.
- Ensure base levels along the installation lengths particularly at corners while work is progressing for maintaining a firm and clear matching of accessories with the DADO trunking for a flawless and aesthetic finish.



Perimeter Systems CAT: 5 - DADO Trunking

Decoduct PVC Perimeter (DADO) Trunking is a new, large capacity Cable Management System for use in modern offices, hospitals, laboratories or workshops, and is ideal for both new building projects and refurbishments.

Salient features of this system include:

- Individual compartment lids for safety and ease of access, with easy clip on features.
- End caps with easy clip on features
- Self aligning Couplers
- External bends featuring internal segregators which offer greater retention and alignment of fitting

Decoduct PVC Perimeter (DADO) Trunking is available in a wide range of decorative finishes in addition to the standard white colour, hence the whole system can be colour coordinated to blend with the interior design/environment

Fabricated DADO Trunking Accessories such as Angles & Tees are under development, and when ready would complete the system and meet the total project requirements of the contractor.

Decoduct PVC DADO Trunking Component Chart

Components	(P1) Profile 1	(P2) Profile 2	(P3) Profile 3	(P4) Profile 4
Base Unit BU1	1	-	-	-
BU2	-	1	-	-
BU3	-	-	1	-
BU4	-	-	-	1
Bevelled Lid BL1	2	-	-	-
BL2	-	1	-	-
BL3	-	-	1	-
Centre Lid CL1	1	-	-	-
CL2	-	1	-	-
CL3	-	-	1	-
CL4	-	-	-	1
Angle Lid AL2	-	1	-	-
AL3	-	-	1	-
AL4	-	-	-	2
Internal Bend (Set) (Number Of Sets Depends On Actual On-Site Requirement)	IB 1	IB 2	IB 3	IB 4
External Bend (Set) (Number Of Sets Depends On Actual On-Site Requirement)	EB 1	EB 2	EB 3	EB 4
Coupler (Set) (Number Of Sets Depends On Actual On-Site Requirement)	C1	C2	C3	C4
End Cap (Set) (Number Of Sets Depends On Actual On-Site Requirement)	EC 1	EC 2	EC 3	EC 4



Mini Trunking System

No more than 45% of the inside space of mini trunking should be occupied by cables. The table below gives the cross-sectional areas of various cables and the maximum number of cables that can be laid in each size of Decoduct mini trunking. If cables of different sizes are to be used, the sum of their nominal cross-sectional areas must be calculated, and then a trunking size with equal or higher filling factor must be selected without exceeding the stipulated space factor of 45%.

Cable Size (mm ²)	Normal Overall Cross Sectional Area(mm ²)	Decoduct Mini Trunking Size References					
		DMT 0	DMT 1	DMT 2	DMT 3	DMT 4	DMT 5
		45% Filling Factor(mm ²)					
		19	68	119	199	336	496
Single core cables		Maximum number of cables					
1.0	6.6	2.0	10	18	30	50	75
1.5	7.6	2.0	8	15	26	44	65
2.5	9.6	1.0	7	12	20	35	51
4.0	14.5	1.0	4	8	13	23	34
6.0	18.8	1.0	3	6	10	17	26
10	29.3	-	2	4	6	11	16
16	40.2	-	1	2	4	8	12
25	63.8	-	1	1	3	5	7
35.0	83.5	-	-	1	1	4	5
50.0	113.0	-	-	-	1	2	4
95.0	204.0	-	-	-	-	1	2
Flat twin & earth cables							
1.0	30.3	-	2	3	6	11	16
1.5	38.3	-	1	3	5	8	12
2.5	54.0	-	1	2	3	6	9
4.0	66.4	-	1	1	2	5	7
6.0	87.9	-	-	1	2	3	5



Mini Trunking System

Safety

To ensure safety in use, the installation should be undertaken by competent personnel and in accordance with relevant codes of practice and statutory requirements. Information on proper installation can be found in:

- Regulations, British Standards specifications and codes of practice
- Regulations for Electrical equipment of buildings (IEE publication)

Description

Decoduct mini trunking consists of a body, and a clip-on lid which is fitted to the body by pressing it along its front face. The lid can be easily removed by lifting it from the body at one end and then peeling it away. The lid has an easy closing mechanism which is designed to give a securely closed installation, yet is easily accessible for maintenance or modifications.

Fixing

Holes should be drilled on the base of the body to mechanically fix to the desired surface using flat head screws. Fixing centres should not be more than 40cm apart, or more than 15cm away from the end of a straight run. On appropriate surfaces, the trunking can also be fixed by using a suitable contact adhesive. Alternatively DECODUCT trunking can be installed on clean dry surfaces.

Jointing

A fine toothed tenon saw and mitre block should be used to cut the trunking, to provide a neat installation. In all straight joints, it is important to stagger the joints of the trunking body and lid to give better protection and reduce joint visibility. On long straight runs, allowance for expansion must be made. For corners, the trunking must be mitred and for T-joints it must be slotted for cable entry.

Self-adhesive fixing

Decoduct self-fix mini trunking is offered with self-adhesive tape for easier fixing on suitable surfaces. The surface should be flat, clean, dry and free from dust or flaky paint. The backing should be peeled-off not more than 12 cm at a time, to expose the adhesive tape. Ensure the trunking is correctly positioned before pressing on surface as the self adhesive tape is designed to give immediate fixing. For permanence, screws can also be used.



Maxi Trunking System

Single-core P.V.C. insulated cables in trunking

For each cable it is intended to use, obtain the appropriate factor from Table 1A.

Add all the cable factors so obtained and compare with the factors for trunking given in Table 1B.

The size of trunking which will satisfactorily accommodate the cables is that size having a factor equal to or exceeding the sum of the cable factors.

TABLE 1A
Cable Factors for trunking

Type of Conductor	Conductor Cross-sectional area mm ²	Factor
Solid	1.0	7.1
	2.5	10.2
Stranded	1.5	8.1
	2.5	11.4
	4.0	15.2
	4.0	15.2
	6.0	22.9
	10.0	36.3

TABLE 1B
Factors for trunking

Dimensions of Trunking mm x mm		Factor
DXT 1	50 x 50	1037
DXT 2	75 x 50	1555
DXT 3	75 x 75	2371
DXT 4A	100 x 40	2200
DXT 4	100 x 50	2091
DXT 5	100 x 100	4252
DXT 6	1 00 x 150	4650

For other sizes and types of cable or trunking

For sizes and types of cable and sizes of trunking other than those given in Tables 1A and 1B above, the number of cables installed should be such that the resulting space factor does not exceed 45%.

The table below gives the 45% filling factors for Decoduct Maxi-Trunking, based on which the right size of trunking can be selected.

Item Code	Size(mm)	45% Filling Factor(mm2)
DXT 1	50 X 50	940
DXT 2	75 X 50	1700
DXT 3	75 X 75	2450
DXT 4A	100 X 40	2350
DXT 4	100 X 50	2250
DXT 5	100 X 100	4350
DXT 6	100 X 150	4500



Maxi Trunking System

Safety

To realize the full advantages of the Decoduct system, as well as to ensure safety, its installation, commissioning and maintenance should be undertaken by competent personnel and in accordance with relevant codes of practice and statutory requirements. Information on the installation of Decoduct products to ensure that so far as it is reasonably practicable they are safe and without risk to health when properly used, can be found in:

- Regulations, British Standards specifications and codes of practice
- Regulations for Electrical equipment of buildings (IEE publication)

Description

Seven sizes of Decoduct maxi trunking are available, each consisting of a U-channel body, and a specially designed clip-on lid for secure closing. The lid is closed by aligning it with the body, clipping it on one end of the body, and pressing into place along the length of the trunking, applying equal pressure on both sides. Lid removal is simply done by starting at one end and peeling of the lid along the length of the trunking.

Fixing

Two widely spaced holes should be drilled on the base of the trunking body at every fixing point. Fixing can be done using screws and fixing points should not be spaced more than one metre apart. The drilled holes should be oversized to allow for expansion, and washers should be used under the heads of screws. Care should be taken not to overtighten the screws.

Jointing

A fine toothed tenon saw and mitre block should be used to cut trunking, for accurate clean cuts leading to a neat installation. In all straight joints, it is important to stagger the joints of the trunking body and lid, to give better cable protection and reduce joint visibility. For corners and T-joints, a comprehensive range of Decoduct maxi-trunking fittings is provided, complete with extended lids on all branches, to provide an overlap. The fittings are fitted by removing the lids, drilling holes and using washers and screws, as in the case of trunking. After the cables are laid, the lids of the fittings should be fitted first, before finally fitting the lids on the trunking body.



STANDARD EXECUTION

Decoduct panel trunking is classified as follows under clause 6 of EN 50085:

Minimum storage & transport temperature:	- 25°C
Application temperature range:	- 15°C to + 60°C
Flame propagation:	Non-flame propagating
Electrical characteristics:	Insulating

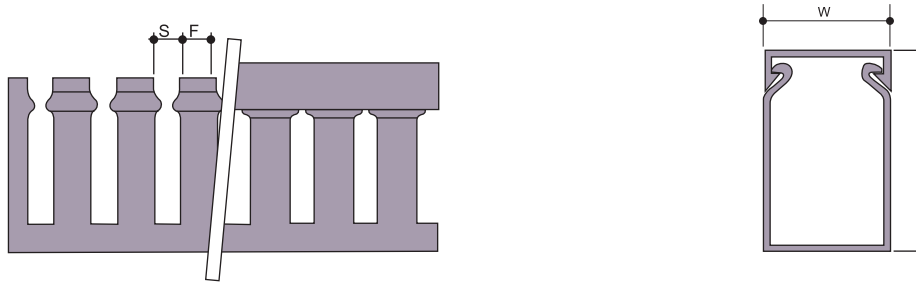
Decoduct panel trunking is supplied in the following standard execution:

Standard length:	2.0 mt.
Standard colour:	RAL 7030 Grey
Material:	Impact modified U-PVC

Non-standard executions are available on request, based on reasonable quantity.

DIAGRAMS

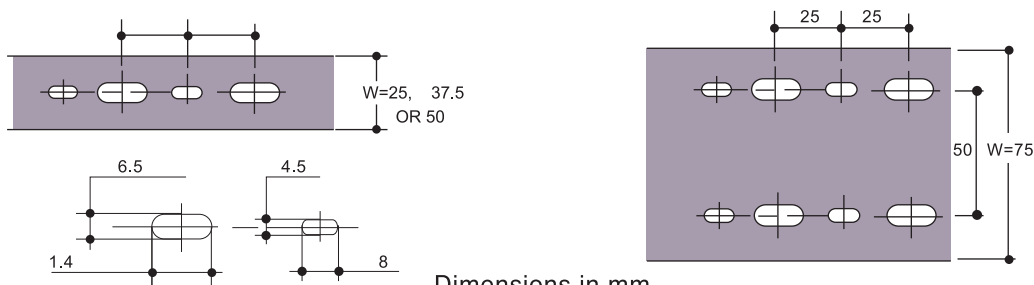
PROFILE DIMENSIONS AND WALL PERFORATIONS



• For dimensions details refer to page 35 and 36

BASE PERFORATION (TO DIN 43 659)

BASE PERFORATIONS (TO DIN 43 659)



Panel Trunking

Rounded wall finger design – no sharp edges

All wall fingers of Decoduct panel trunking have a rounded design with burr-free edges, so that any injury, either to the hands of the user or the insulation of the cables, is prevented.

Holes on fingers for cable retainer insertion

For the bigger sizes of Decoduct panel trunking, holes are provided on one finger every 100 mm, for insertion of a screwdriver to act as a cable retainer, making the wiring faster and easier.

Cable retaining protrusions on wall fingers

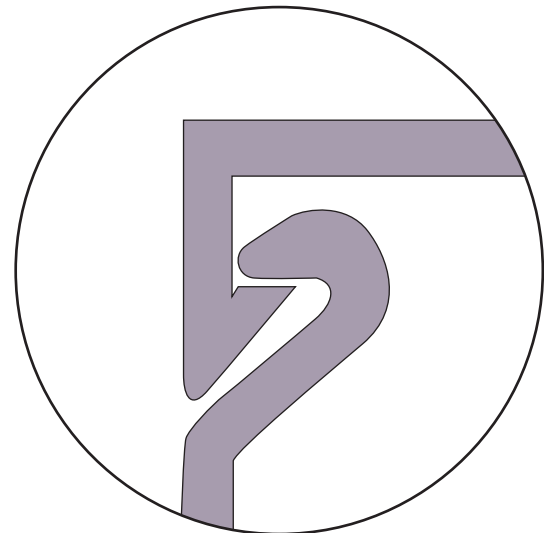
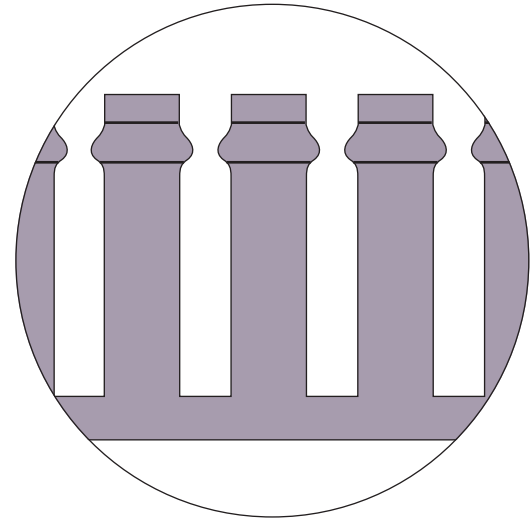
Rounded protrusions at the top of all wall fingers effectively reduce the slot width, for cable retention. For the bigger sizes of Decoduct panel trunking, protrusions are also provided at the centre of wall fingers for easy positioning of exiting cables.

Secure lid closing

The lid closing mechanism is designed for easy lid fixing and removal, but at the same time for secure trunking closing.

Sizes based on 12.5 mm module to DIN 43 660

The dimensions of Decoduct panel trunking are based on steps of 12.5 mm, as required by DIN 43 660. The use of the 12.5 mm module as a basis for sizing makes Decoduct ideal for perfect size interfacing with other DIN 12.5 components.





Conduit Systems

Single-core PVC insulated cables in straight runs of conduit not exceeding 3m in length

For each cable it is intended to use, obtain the appropriate factor from Table 12A. Add all the cable factors so obtained and compare with the conduit factors given in Table 12B. The conduit size which will satisfactorily accommodate the cables is that size having a factor equal to or exceeding the sum of the cable factors.

TABLE 12A
Cable factors for short straight runs

Type of Conductor	Conductor cross sectional area mm ²	Factor
Solid	1.0	22
	1.5	27
	2.5	39
	1.5	31
Stranded	2.5	43
	4.0	58
	6.0	88
	10.0	146

Table 12B Conduit factors for short straight runs

Conduit dia (mm)	Factor
20	460
25	800
32	1400
38	1960
50	3640

TABLE 12C Cable factors for short straight runs or runs incorporating bends

Type of Conductor	Conductor cross sectional area mm ²	Factor
Solid or Stranded	1.0	16
	1.5	22
	2.5	30
	4.0	43
	6.0	58
	10.0	105

Single-core PVC insulated cables in straight runs of conduit exceeding 3m in length or in runs of any length incorporating bends or sets

For each cable it is intended to use, obtain the appropriate factor from Table 12C. Add all the cable factors so obtained and compare with the conduit factors given in Table 12D, taking into account the length of run it is intended to use and the number of bends and sets in that run. The conduit size which will satisfactorily accommodate the cables is that size having a factor equal to or exceeding the sum of the cable factors.

TABLE 12D Conduit factors for runs incorporating bends

Length of run m	Conduit																								
	20	25	32	38	50	20	25	32	38	50	20	25	32	38	50	20	25	32	38	50	20	25	32	38	50
	Straight					One bend					Two bend					Three bend					Four bend				
1.0	Covered by Tables 12A and 12B					303	543	947	1326	2462	286	514	900	1260	2340	256	463	818	1145	2127	213	388	692	969	1799
1.5						294	528	923	1292	2400	270	487	857	1200	2228	233	422	750	1050	1950	182	333	600	840	1560
2.0						286	514	900	1260	2340	126	463	818	1145	2127	213	388	692	969	1799	159	292	529	741	1375
2.5						278	500	878	1229	2283	244	442	783	1096	2036	196	358	643	900	1672	141	260	474	664	1232
3.0						270	487	857	1200	2228	233	422	750	1050	1950	182	333	600	840	1560					
3.5	290	521	911	1275	2369	263	475	837	1172	2176	222	404	720	1008	1872	163	311	563	788	1464					
4.0	286	514	900	1260	2340	256	463	818	1145	2127	213	388	692	969	1799	159	292	529	741	1375					
4.5	282	507	889	1244	2311	250	452	800	1120	2080	204	373	667	934	1734	149	275	500	700	1300					
5.0	278	500	878	1229	2283	244	442	783	1096	2036	196	358	643	900	1672	141	260	474	664	1232					
6.0	270	487	857	1199	2228	233	422	750	1050	1950	182	333	600	840	1560										
7.0	263	475	837	1171	2176	222	404	720	1008	1872	169	311	563	788	1464										
8.0	256	463	818	1145	2127	213	388	692	969	1799	159	292	529	741	1375										
9.0	250	452	800	1120	2080	204	373	667	934	1734	149	275	500	700	1300										
10.0	244	442	783	1096	2036	193	358	643	900	1672	141	260	474	664	1232										

Conduit Systems

Safety

To ensure safety in installation, commissioning and maintenance, work should be undertaken by competent personnel and in accordance with relevant codes of practice and statutory requirements. Information on installation can be found in:

- Regulations, British Standards specifications and codes of practice
- Regulations for Electrical equipment of buildings (IEE publication)

Surface Installation

Conduit used for in-surface installations should be fixed using saddles or spacer bar saddles. The maximum recommended spacing between saddles is 1.0 metre for horizontal conduit runs and 1.25 metres for vertical conduit runs. Saddles should be fixed no more than 20 cm on either side of the bends or boxes.

As PVC conduit expands with increasing temperatures, it should be able to slide in the saddles, to allow for expansion/contraction movements. In long straight runs, the use of an expansion coupling is recommended every 6 metres to absorb expansion and avoid conduit buckling.

Jointing

Solvent welding is the recommended method of joining conduit into fittings like couplings, adaptors, bends and boxes. Decoduct PVC sealing cement provides a waterproof permanent joint.

Bonding Instructions :

A. Surface Preparation:

Pipes and fittings to be bonded must be clean, dry and free from oil, dirt, moisture and grease.

B. Pipes and Sockets :

- Cut pipe square, remove any burrs from both the inside and outside of the pipe with a knife, file or reamer.
- Ensure product is free from dirt, grease and moisture.
- For proper mating, insert pipe into the full length of the socket.
- Apply an even layer of cement to the pipe and the fitting.
- Immediately push the pipe into the fitting together to the full depth without twisting. Hold in place for 30 seconds and clean off excess cement. Maximum strength is achieved thereafter.

Joints & Couplers

Expansion Couplers are installed with short side coated with solvent cement (DSG2) and the coupler pushed firmly over the conduit to the notch. Expansion side of the coupler should be coated inside with a semi permanent mastic and shall be positioned in such a way that the conduit is mid point to the notch. This will facilitate expansion or contraction of the conduits.

Bending

Bending of conduit up to 25mm diameter can be carried out cold, using the correct bending spring size, according to the diameter and the gauge of the conduit. After inserting the spring, the bend can be made by hand by bending slightly beyond the required angle, and allowing the conduit to recover back to the required position. Bending should not be done too fast and once made, a bend should not be forced backwards, as these actions can lead to conduit or spring damage. According to IEE Regulations, the bend inner radius should not be less than 2.5 times the conduit outside diameter.

For conduit sizes over 25mm diameter, hot bending is required, with the same procedure as cold bending, but with the application of gentle heat just prior to bending. No open flames should be used for heating. Once the conduit is warm, it can be bent around a suitable former, and held there until it cools and sets in position.

General

Once installation is complete, wires can be drawn through the system by using nylon draw tape. PVC is an electrical insulating material, making the use of a separate insulated earth wire essential.

Note: All information is provided as guidance only. Installation should be carried out by a suitable qualified electrician.



u' PVC ELECTRICAL CONDUITS & FITTINGS

Schedule 40 & 80 rigid conduit system are manufactured in accordance with NEMA TC2, TC3, TC6 and TC8 standards, made from rigid pvc compound and used for exposed, encased in concrete, concealed in walls and direct burial applications including system for:

- UTILITIES
- COMMERCIAL AND INDUSTRIAL BUILDING
- RESIDENTIAL APPLICATION
- DATA AND COMMUNICATION LINES
- TRANSPORTATION SYSTEM-TUNNELS AND SUBWAYS

PROPERTY	UNIT	VALUE
SPECIFIC GRAVITY	-	1.42
TENSILE STRENGTH	N/mm ²	52
ELONGATION AT BREAKS	%	>100
SHORE HARDNESS	D	82
HEAT DEFLECTION TEMPERATURE	°C	78
VICAT SOFTENING TEMPERATURE	°C	>80
FLAMMABILITY	-	SELF EXTINGUISHING

Decoduct range of Schedule 40 & 80 conduits & fittings are durable and effective for years of maintenance free performance. This exhibit superior electrical nonconductor properties and is suitable for using with 90°C conductors.

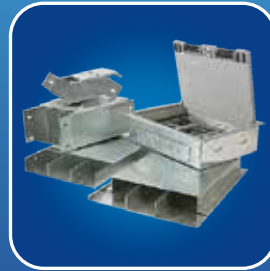
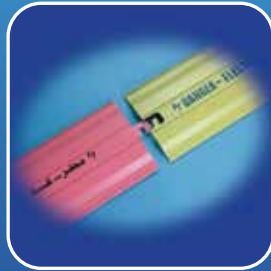
Decoduct Schedule 40 & 80 product are resistant to most chemicals, unaffected by all kinds of water, soils and corrosive liquids and corrosion conditions normally encountered in installation.



Notes

A large area of the page is filled with horizontal dashed lines, providing a space for writing notes.

NOTES



DECODUCT[®]
CABLE MANAGEMENT SYSTEMS

EDISON[®]
ELECTRICAL ACCESSORIES

INTERGARD
Cable Protection Systems

Slimline



ELITE

GLASS

Metal Clad

EDISON
PLUS

DURA

Euro Range

WEATHERPROOF



HEAD OFFICE

INTERPLAST CO. LTD.

P.O. Box: 4679, Sharjah, UAE

Tel: +971 6 5339090 / 06 5395577, Fax: +971 6 5336905 / 6 5395575

Email: intrplst@emirates.net.ae • ipelectrical@interplast-uae.com

customerservice@interplast-uae.com



BRANCH OF

INTERPLAST CO. LTD.

P.O. Box: 355087 Riyadh 11383, K.S.A.

Tel. +966 11 2654501, 11 2654502, 11 2651988

Fax. +966 11 2651833

Email: info@interplast-ksa.com



www.harwal.net

Innovation is our culture...

Supplied by:

Blank white box for supplier information.